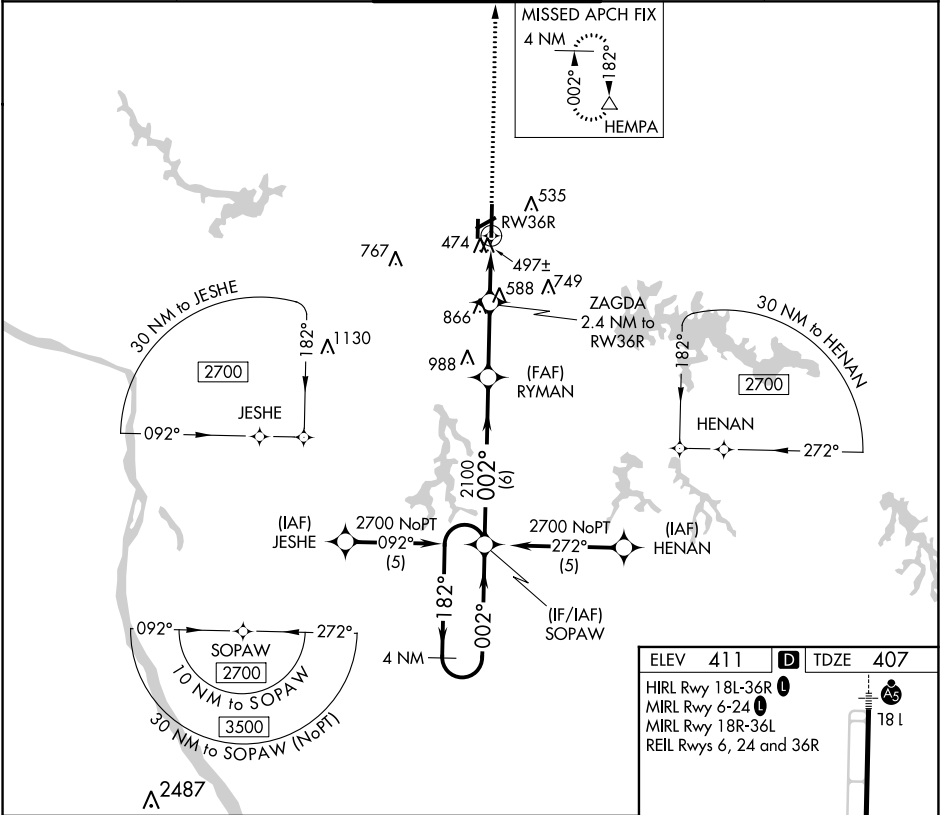


APP CRS	Rwy Idg	6506
002°	TDZE	407
	Apt Elev	411

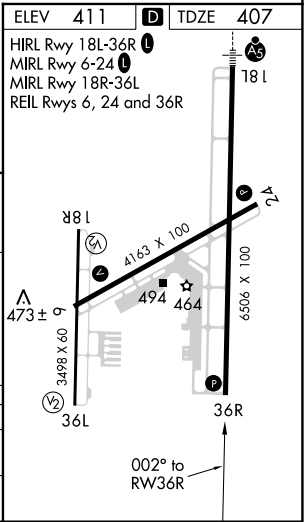
RNAV (GPS) RWY 36R  
SOUTHERN ILLINOIS (MDH)

<p>▼ DME/DME RNP-0.3 NA. Visibility reduction by helicopters NA. When local altimeter setting not received, use Williamson Co Rgnl altimeter setting and increase all MDA 40 feet.</p> <p>▲ VDP NA when using Williamson Co Rgnl altimeter setting.</p>	<p>MISSED APPROACH: Climb to 2700 direct HEMPA and hold.</p>
---	--

ATIS 119.725	KANSAS CITY CENTER 127.475 346.275	CARBONDALE TOWER ★ 125.35 (CTAF) 322.4	GND CON 121.8	UNICOM 122.95
-----------------	---------------------------------------	---	------------------	------------------



4 NM Holding Pattern		VGSJ and descent angles not coincident (VGSJ Angle 4.00/TCH 69).		2700	HEMPA
SOPAW		RYMAN			
2700 ← 182° 002° →		002° →		ZAGDA 2.4 NM to RW36R 0.7 NM to RW36R	
		3.04° TCH 55		RW36R	
2100		1200			
6 NM		2.7 NM		1.7 0.7	
CATEGORY	A	B	C	D	
RNAV MDA	760-1 353 (400-1)			760-1¼ 353 (400-1¼)	
CIRCLING	900-1 489 (500-1)		900-1½ 489 (500-1½)	980-2 569 (600-2)	



EC-3, 03 DEC 2020 to 31 DEC 2020

EC-3, 03 DEC 2020 to 31 DEC 2020