

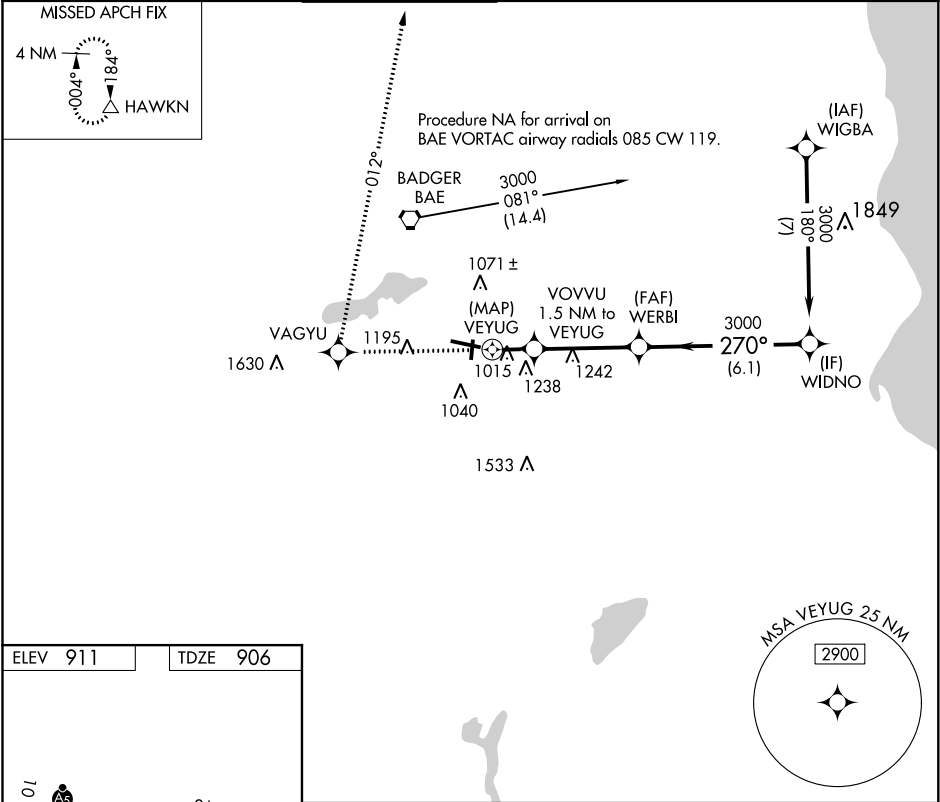
APP CRS	Rwy Idg	5849
270°	TDZE	906
	Apt Elev	911

RNAV (GPS) RWY 28

WAUKESHA COUNTY (UES)

<div><div>▽</div><div>DME/DME RNP-0.3 NA. Visibility reduction by helicopters NA. When local altimeter setting not received, use Lawrence J Timmerman altimeter setting and increase all MDA 60 feet, increase Circling Cat C and D visibility ¼ mile.</div></div>	<div><div>MISSED APPROACH:</div><div>Climb to 3000 direct VAGYU and right turn via 012° track to HAWKN and hold.</div></div>
--	--

ATIS 118.875	MILWAUKEE APP CON 125.35 307.0	WAUKESHA TOWER ★ 123.7 (CTAF) 0	GND CON 121.6	CLNC DEL 121.6	CLNC DEL 128.7 (When twr closed)	UNICOM 122.95
-----------------	-----------------------------------	------------------------------------	------------------	-------------------	--	------------------



3000	VAGYU	HAWKN	VGS and descent angles not coincident (VGS Angle 3.75/TCH 37).			
<div>↑</div>	<div>✧</div>	<div>tr 012°</div>	WERBI	WIDNO		
			VOVVU 1.5 NM to VEYUG	3000	270°	3000
			VEYUG	1640	≤3.38° TCH 37	Procedure Turn NA
			1.5 NM	3.8 NM	6.1 NM	
CATEGORY	A	B	C	D		
LNAV MDA	1420-1	514 (600-1)	1420-1½ 514 (600-1½)	1420-1¾ 514 (600-1¾)		
CIRCLING	1460-1 549 (600-1)	1480-1 569 (600-1)	1520-1¾ 609 (700-1¾)	1600-2¼ 689 (700-2¼)		

EC-3, 03 DEC 2020 to 31 DEC 2020

EC-3, 03 DEC 2020 to 31 DEC 2020