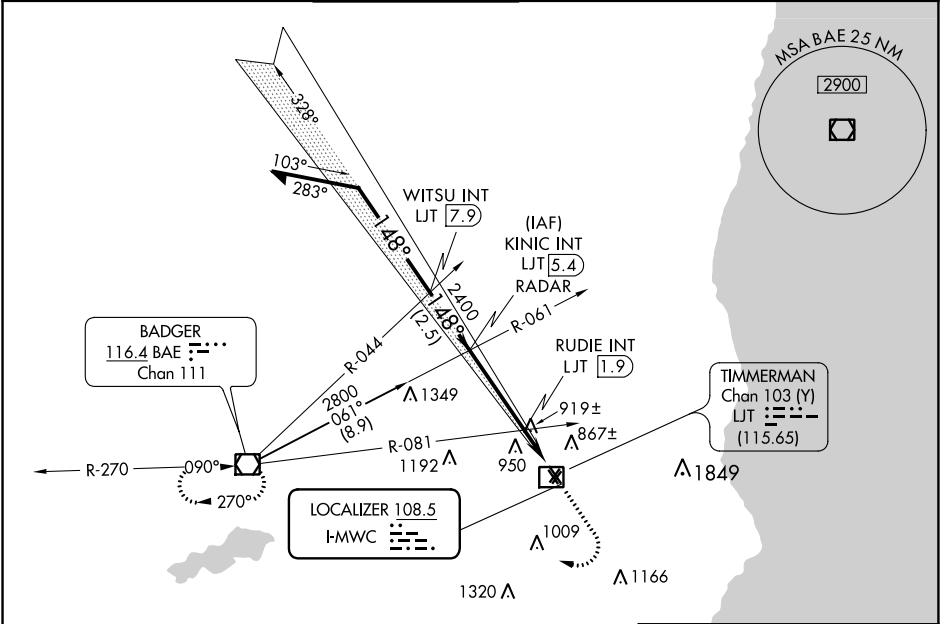


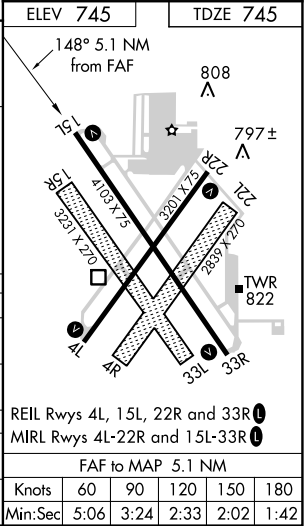
LOC I-MWC <b>108.5</b>	APP CRS <b>148°</b>	Rwy Idg TDZE Apt Elev	<b>4103</b> <b>745</b> <b>745</b>
---------------------------	------------------------	-----------------------------	---

**LOC RWY 15L**  
LAWRENCE J TIMMERMAN (MWC)

Circling NA to Rwys 4R, 15R, 22L and 33L. Rwy 15L helicopter visibility reduction below ¾ SM NA. # Simultaneous reception of I-MWC and LJT DME required.				MISSED APPROACH: Climb to 3000 then right turn direct BAE VOR/DME and hold.	
ATIS <b>128.3</b>	MILWAUKEE APP CON <b>125.35 307.0</b>	TIMMERMAN TOWER ★ <b>120.5 (CTAF) 0</b>	GND CON <b>121.7</b>	CLNC DEL <b>121.7</b> (When twr closed)	UNICOM <b>122.95</b>



*1320 when using General Mitchell Intl altimeter setting. Remain within 10 NM		KINIC INT LJT [5.4] RADAR		3000	BAE
2800		WITSU INT LJT [7.9]		RUDIE INT LJT [1.9]	
2700		2400		*1280	
		2.5 NM		3.5 NM	
				1.6 NM	
CATEGORY	A	B	C	D	
S-LOC 15L	1280-1	535 (600-1)	1280-1½	535 (600-1½)	
CIRCLING	1280-1	1340-1	1340-1½	1340-2	
	535 (600-1)	595 (600-1)	595 (600-1½)	595 (600-2)	
RUDIE FIX MINIMUMS (DUAL VOR RECEIVERS OR DME REQUIRED #)					
S-LOC 15L	1180-1	435 (500-1)	1180-1¼	435 (500-1¼)	
CIRCLING	1220-1	1340-1	1340-1½	1340-2	
	475 (500-1)	595 (600-1)	595 (600-1½)	595 (600-2)	



EC-3, 03 DEC 2020 to 31 DEC 2020

EC-3, 03 DEC 2020 to 31 DEC 2020