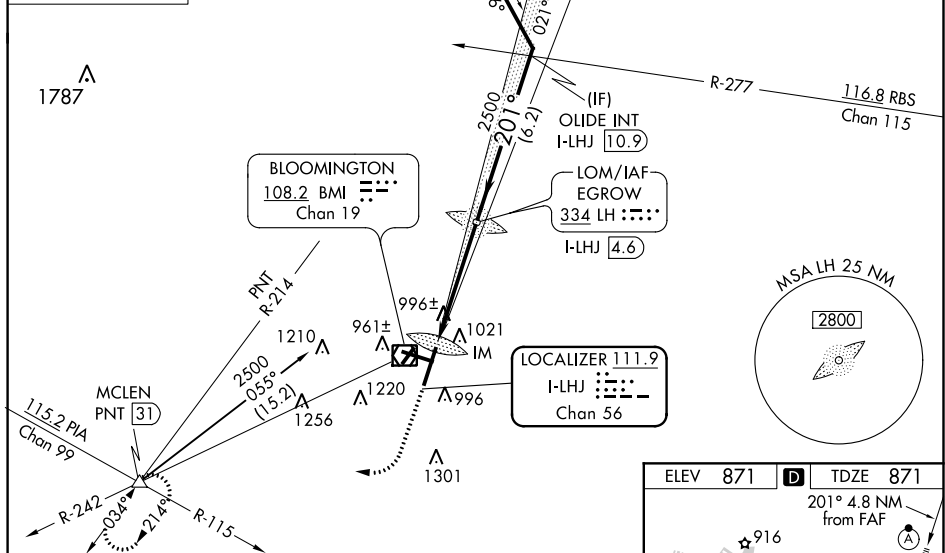


ILS or LOC RWY 20
CENTRAL IL RGNL ARPT AT BLOOMINGTON-NORMAL (BMI)

MISSED APPROACH: Climb to 1500 then climbing right turn to 3000 on heading 270° and PNT VOR/DME R-214 to MCLEN INT/PNT 31 DME and hold.



FAF to MAP 4.8 NM					
Knots	60	90	120	150	180
Min:Sec	4:48	3:12	2:24	1:55	1:36

ILS or LOC RWY 20