

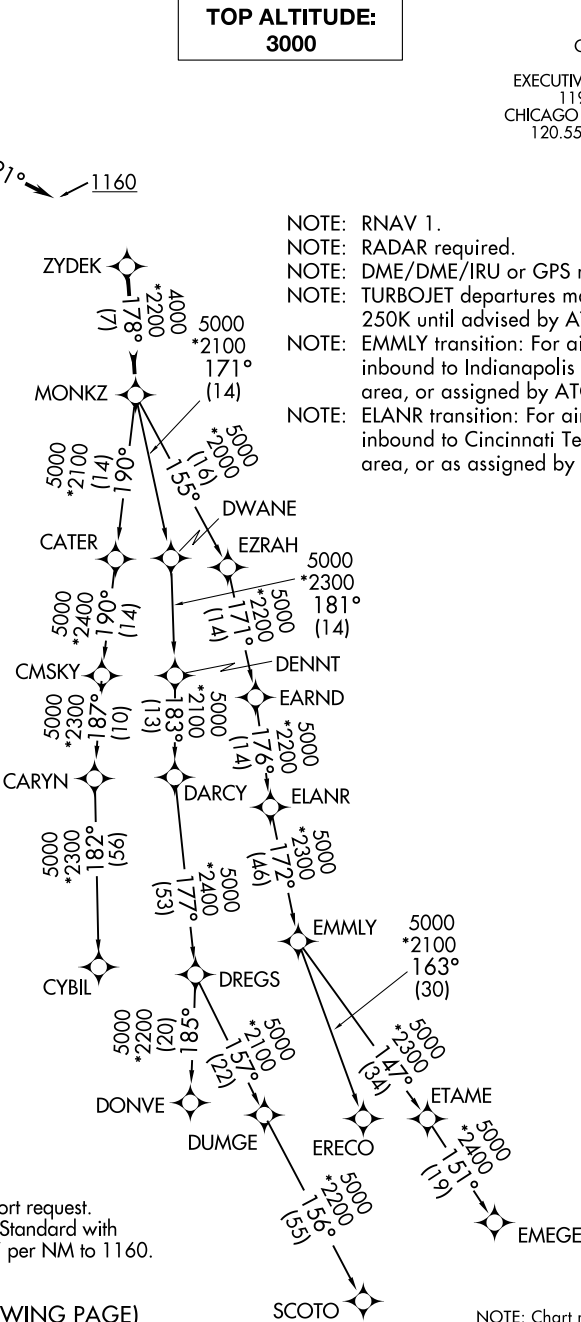
(MONKZ5.MONKZ) 18032
MONKZ FIVE DEPARTURE (RNAV)

AL-5028 (FAA) CHICAGO EXECUTIVE (PWK)
CHICAGO/PROSPECT HEIGHTS/WHEELING, ILLINOIS

TOP ALTITUDE:
3000

ATIS 124.2
GND CON 121.7
EXECUTIVE TOWER * 119.9 (CTAF)
CHICAGO DEP CON 120.55 306.925

- NOTE: RNAV 1.
NOTE: RADAR required.
NOTE: DME/DME/IRU or GPS required.
NOTE: TURBOJET departures maintain 250K until advised by ATC.
NOTE: EMMLY transition: For aircraft inbound to Indianapolis Terminal area, or assigned by ATC.
NOTE: ELANR transition: For aircraft inbound to Cincinnati Terminal area, or as assigned by ATC.



TAKEOFF MINIMUMS
Rwys 6, 24: NA - Airport request.
Rwys 12, 16, 30, 34: Standard with
minimum climb of 500' per NM to 1160.

(NARRATIVE ON FOLLOWING PAGE)

NOTE: Chart not to scale.

MONKZ FIVE DEPARTURE (RNAV)
(MONKZ5.MONKZ) 01FEB18

CHICAGO/PROSPECT HEIGHTS/WHEELING, ILLINOIS
CHICAGO EXECUTIVE (PWK)