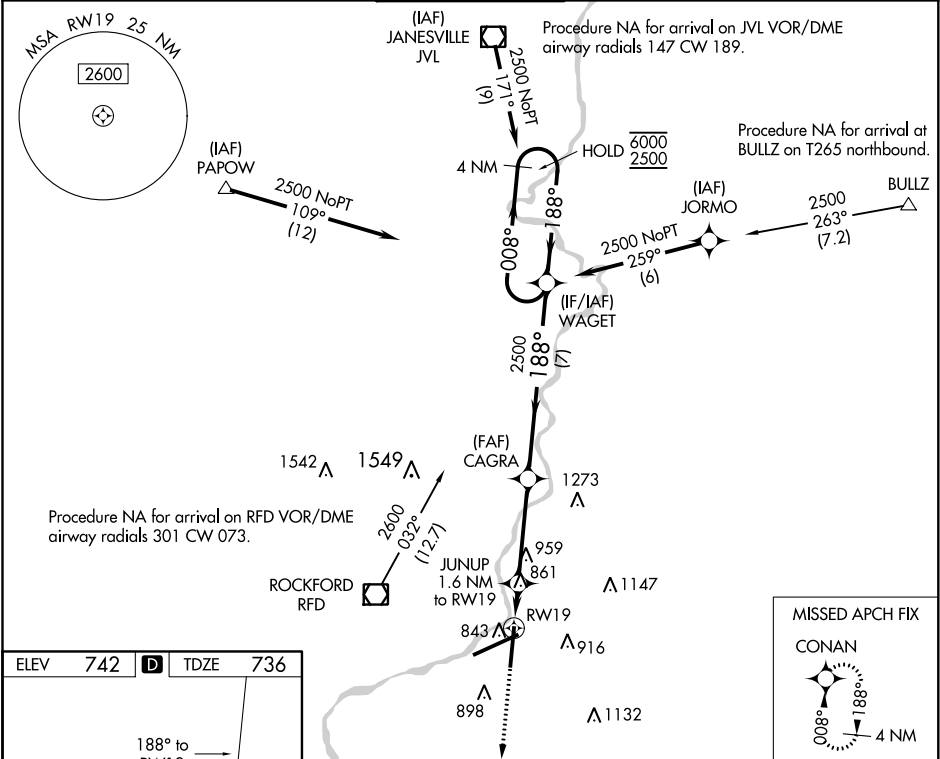


RNP APCH.				MISSED APPROACH: Climb to 2500 direct CONAN and hold.
For uncompensated Baro-VNAV systems, LNAV/VNAV NA below -20°C or above 54°C.				
ATIS 127.6	ROCKFORD APP CON 121.0 327.0	ROCKFORD TOWER 118.1 290.375	GND CON 121.9 290.375	CLNC DEL 119.25



ELEV 742 D TDZE 736		MISSED APCH FIX CONAN 008° 188° 4 NM			
2500 CONAN		VGSI and RNAV glidepath not coincident (VGSI Angle 3.00/TCH 75). CAGRA			
*LNAV only.		4 NM Holding Pattern			
RW19		WAGET			
1 NM 0.6 NM 3.8 NM 7 NM		188° 008° 6000 2500 GP 3.00° TCH 50			
CATEGORY	A	B	C	D	
LPV DA	936-3/4 200 (200-3/4)				
LNAV/VNAV DA	1039-1 303 (300-1)				
LNAV MDA	1120-1	384 (400-1)	1120-1 1/8	384 (400-1 1/8)	
C CIRCLING	1220-1 478 (500-1)	1280-1 538 (600-1)	1320-1 1/2 578 (600-1 1/2)	1460-2 1/4 718 (800-2 1/4)	