

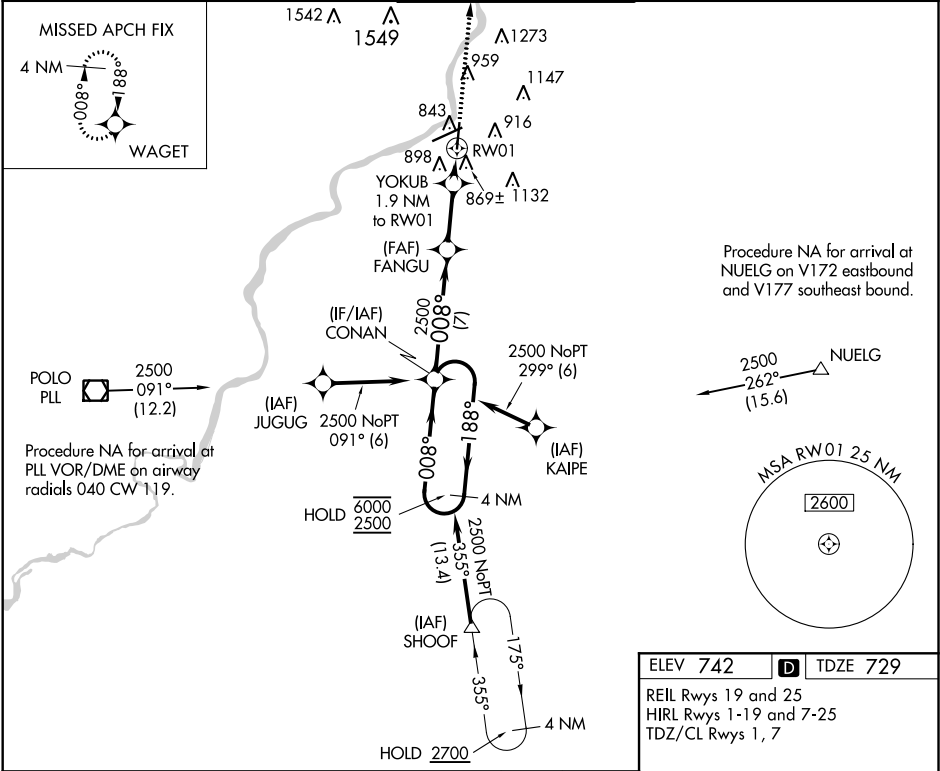
WAAS CH 42720 W01A	APP CRS 008°	Rwy Idg TDZE 729 Apt Elev 742
--	------------------------	---

RNAV (GPS) RWY 1

CHICAGO/ROCKFORD INTL (RFD)

RNP APCH.	For uncompensated Baro-VNAV systems, procedure NA below -16°C or above 39°C. For inop ALS, increase LNAV Cats C and D visibility to RVR 6000. # RVR 1800 authorized with use of FD or AP or HUD to DA.	MALSR	MISSED APPROACH: Climb to 2500 direct WAGET and hold.
-----------	--	-------	---

ATIS 127.6	ROCKFORD APP CON 121.0 327.0	ROCKFORD TOWER 118.1 290.375	GND CON 121.9 290.375	CLNC DEL 119.25
----------------------	--	--	---------------------------------	---------------------------



ELEV 742	D TDZE 729
REIL Rwy 19 and 25 HIRL Rwy 1-19 and 7-25 TDZ/CL Rwy 1, 7	

4 NM Holding Pattern		CONAN	FANGU	YOKUB 1.9 NM to RW01	WAGET
6000 ← 188°		008° →	2500	*1.1 NM to RW01	*LNAV only
2500		008°	2500	0.8	1.1
GP 3.00° TCH 50		7 NM	3.6 NM	0.8	1.1
CATEGORY	A	B	C	D	
LPV DA#		929/24	200 (200-½)		
LNAV/VNAV DA		1200/60	471 (500-1¼)		
LNAV MDA	1120/24	391 (400-½)	1120/35	391 (400-¾)	
CIRCLING	1220-1 478 (500-1)	1280-1 538 (600-1)	1320-1½ 578 (600-1½)	1460-2¼ 718 (800-2¼)	

