

LOC I-JVL
109.1

APP CRS
044°

Rwy Idg
TDZE
Apt Elev
6701
806
808

ILS or LOC RWY 4

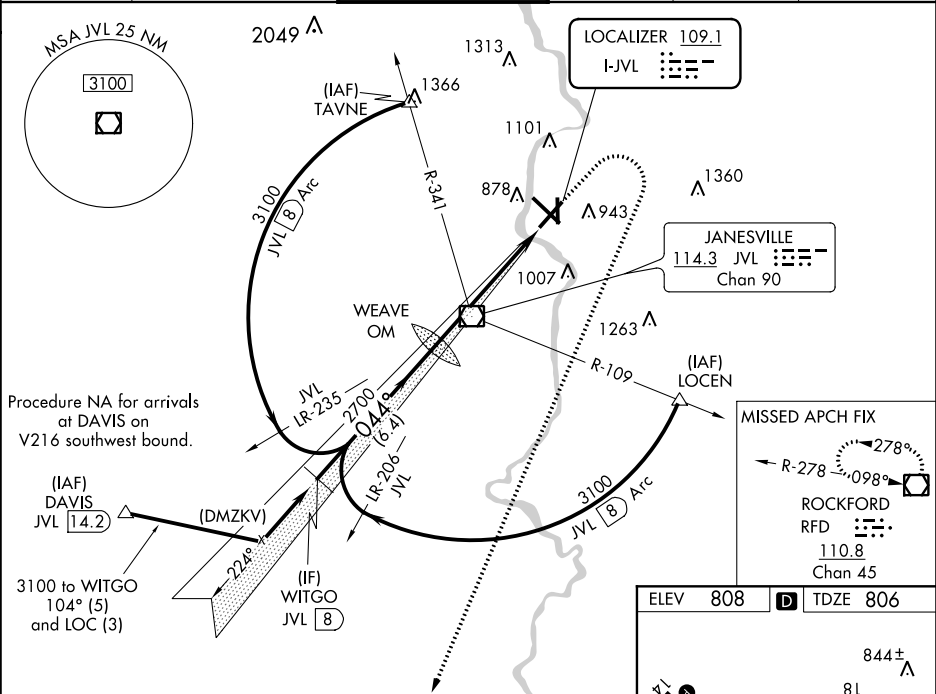
SOUTHERN WISCONSIN RGNL (JVL)

⚠ Circling to Rwy 18 NA at night. When local altimeter setting not received, use Rockford altimeter setting and increase all DA 69 feet and all MDA 80 feet, increase S-LOC 4 Cats C/D and Circling Cat C visibility ½ mile, and Circling Cat D ¼ mile. For inoperative MALSR when using Rockford altimeter setting increase S-ILS 4 all Cats visibility to 1 mile.

MALSR

MISSED APPROACH: Climb to 1700 then climbing right turn to 3100 direct RFD VOR/DME and hold.

ATIS 128.25	ROCKFORD APP CON 121.0 327.0	JANESVILLE TOWER ★ 118.8(CTAF) 225.4	GND CON 121.65	CLNC DEL 121.65	UNICOM 122.95
-----------------------	--	--	--------------------------	---------------------------	-------------------------



Procedure Turn NA

WITGO JVL (B)

WEAVE OM

3100

044°

2700

6.4 NM

5.7 NM

1700

3100

RFD

VGSI and ILS glidepath not coincident (VGSI Angle 3.00/TCH 54).

CATEGORY	A	B	C	D
S-ILS 4	1006-½ 200 (200-½)			
S-LOC 4	1400-½ 594 (600-½)	1400-1 594 (600-1)	1400-1¼ 594 (600-1¼)	
CIRCLING	1400-1 592 (600-1)	1400-1½ 592 (600-1½)	1420-2 612 (700-2)	

ELEV 808

TDZE 806

REIL Rwy 14 and 22

MIRL Rwy 18-36

HIRL Rwy 4-22 and 14-32

FAF to MAP 5.7 NM

Knots	60	90	120	150	180
Min:Sec	5:42	3:48	2:51	2:17	1:54