

WAAS CH 69217 W04A	APP CRS 044°	Rwy Idg TDZE Apt Elev	7701 889 913
--	------------------------	-----------------------------	---

RNAV (GPS) RWY 4

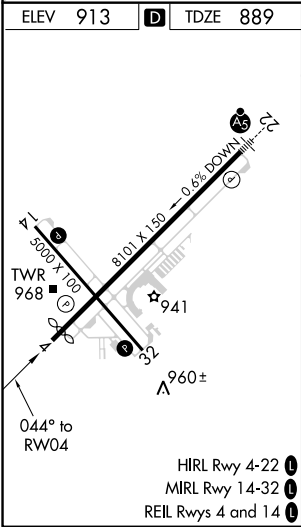
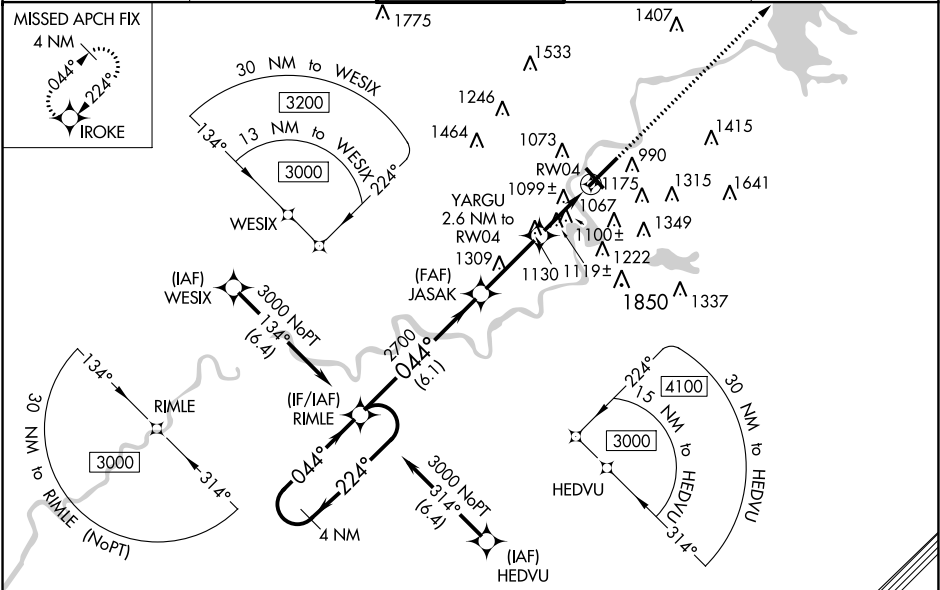
CHIPPEWA VALLEY RGNL (EAU)

⚠

For uncompensated Baro-VNAV systems, LNAV/VNAV NA below -21°C (-5°F) or above 54°C (130°F). Baro-VNAV and VDP NA when using Rice Lake Rgnl-Carl's Field altimeter setting. DME/DME RNP-0.3 NA. When local altimeter setting not received, use Rice Lake Rgnl-Carl's Field altimeter setting and increase LPV DA to 1199, LNAV/VNAV DA to 1489 and all visibilities ¾ SM. Increase all MDA 120 feet and LNAV Cat C/D and Circling Cat C visibility ¼ SM. Circling Rwy 32 NA at night.

MISSED APPROACH:
Climb to 3000 direct IROKE and hold.

ATIS 126.025	MINNEAPOLIS CENTER 125.3 335.6	EAU CLAIRE TOWER★ 118.575 (CTAF) 0	GND CON 120.925	UNICOM 122.95
------------------------	--	--	---------------------------	-------------------------



ELEV 913 TDZE 889				
4 NM Holding Pattern RIMLE				
3000 ← 224° → 044° →				
GP 3.00° TCH 44				
JASAK 2700 YARGU 2.6 NM to RW04				
*1.3 NM to RW04				
*1740				
6.1 NM 3 NM 1.3 NM 1.3 NM				
CATEGORY	A	B	C	D
LPV DA	1089-¾ 200 (200-¾)			
LNAV/VNAV DA	1379-1½ 490 (500-1½)			
LNAV MDA	1360-1	471 (500-1)	1360-1¾	471 (500-1¾)
CIRCLING	1480-1 567 (600-1)	1540-1 627 (700-1)	1660-2¼ 747 (800-2¼)	2200-3 1287 (1300-3)