

LOC/DME I-EAU	APP CRS	Rwy Idg	7301
109.5	224°	TDZE	913
Chan 32		Apt Elev	913

ILS or LOC RWY 22

CHIPPEWA VALLEY RGNL (EAU)

From DRDAN and MENRD RNAV-1 GPS required.
DME or RADAR required.

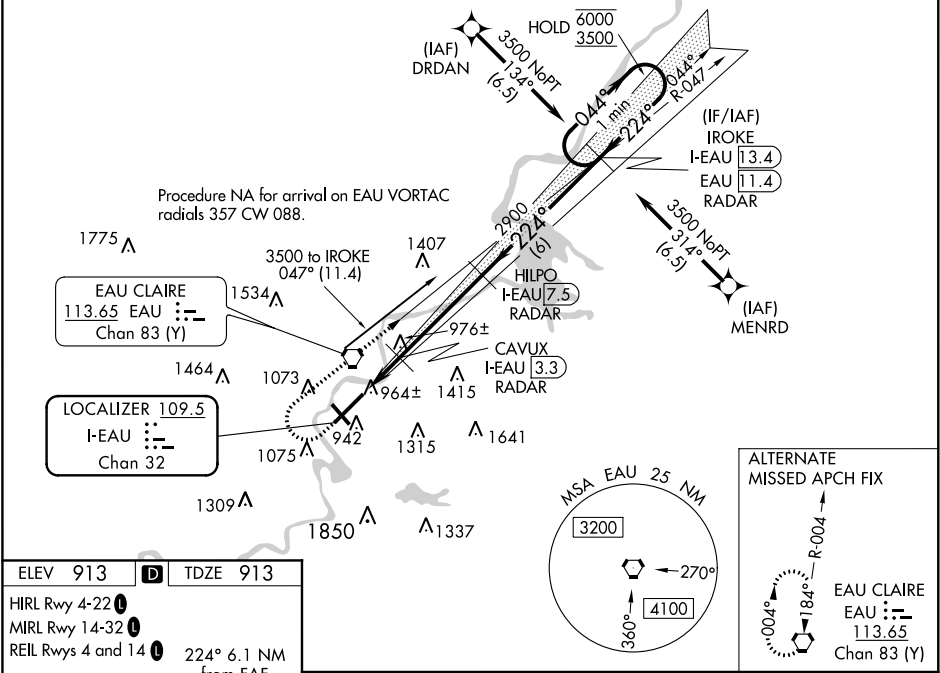
⚠

For inop ALS increase S-LOC 22 Cat C and D visibility to ¾ SM. For inop ALS when using Rice Lake altimeter setting, increase S-ILS 22 all Cats visibility to 1 SM. When local altimeter setting not received, use Rice Lake altimeter setting and increase DA 110 feet and all MDA 120 feet, increase S-LOC 22 Cat C and D and Circling Cat C visibility ¼ SM. VDP NA when using Rice Lake altimeter setting.

MALSR

MISSED APPROACH: Climb to 1600 then climbing right turn to 3500 on EAU VORTAC R-047 to IROKE/I-EAU LOC/DME 13.4 DME/RADAR and hold.

ATIS 126.025	MINNEAPOLIS CENTER 125.3 335.6	EAU CLAIRE TOWER ★ 118.575 (CTAF) 0	GND CON 120.925	UNICOM 122.95
-----------------	-----------------------------------	--	--------------------	------------------



ELEV 913 **D** TDZE 913

HIRL Rwy 4-22 **1**

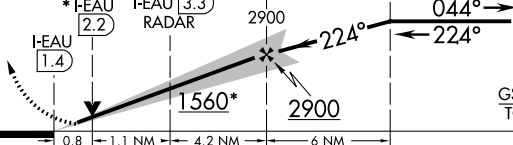

MIRL Rwy 14-32 **1**

REIL Rwy 4 and 14 **1**

224° 6.1 NM from FAF

FAF to MAP 6.1 NM

Knots	60	90	120	150	180
Min:Sec	6:06	4:04	3:03	2:26	2:02

1600 ↑	3500 ↘ EAU R-047	IROKE EAU 13.4 RADAR	Use I-EAU DME when on the localizer course.		One Minute Holding Pattern	
* LOC only			* I-EAU 2.2	CAVUX EAU 3.3 RADAR	HILPO EAU 7.5 RADAR	IROKE EAU 13.4 RADAR
			2900	2900	044° → 6000 ← 224° 3500	GS 3.00° TCH 50°
CATEGORY	A		B	C	D	
S-ILS 22	1113-½		200 (200-½)			
S-LOC 22	1220-½		307 (400-½)			
 CIRCLING	1480-1 567 (600-1)		1540-1 627 (700-1)	1660-2¼ 747 (800-2¼)	2200-3 1287 (1300-3)	