

VORTAC GRB <b>115.5</b> Chan <b>102</b>	APP CRS <b>145°</b>	Rwy Idg TDZE Arprt Elev	<b>N/A</b> <b>N/A</b> <b>695</b>
---	------------------------	-------------------------------	--

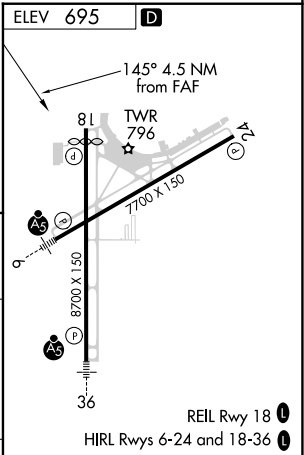
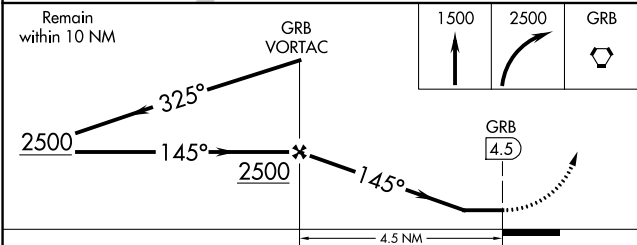
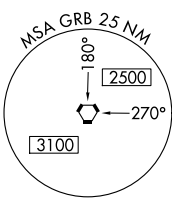
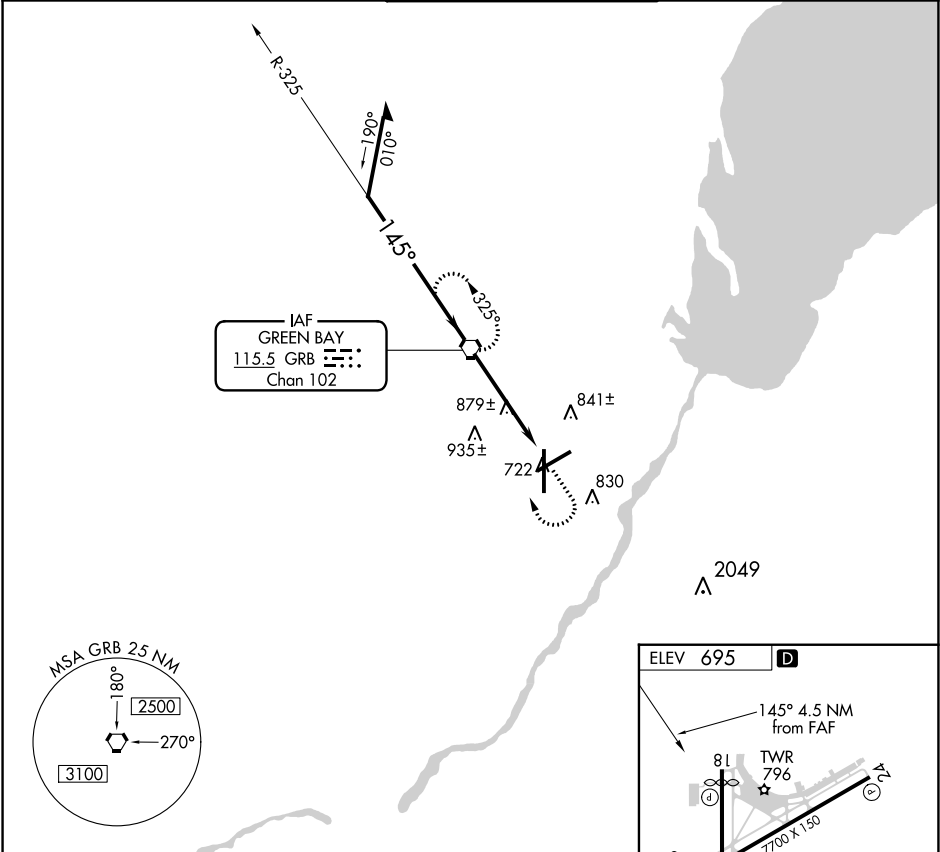
VOR-A

GREEN BAY-AUSTIN STRAUBEL INTL (GRB)

  
ASR

MISSED APPROACH: Climb to 1500 then climbing right turn to 2500 direct GRB VORTAC and hold.

ATIS <b>124.1</b>	GREEN BAY APP CON ★ <b>119.4 338.2</b>	GREEN BAY TOWER ★ <b>118.7 (CTAF) 257.8</b>	GND CON <b>121.9</b>	CLNC DEL <b>121.75</b>
----------------------	---	--	-------------------------	---------------------------



CATEGORY	A	B	C	D	FAF to MAP 4.5 NM					
CIRCLING	1200-1 505 (600-1)		1200-1½	1260-2	Knots	60	90	120	150	180
			505 (600-1½)	565 (600-2)	Min:Sec	4:30	3:00	2:15	1:48	1:30