

WAAS
CH **42902**
W36A

APP CRS
002°

Rwy Idg
TDZE **684**
Apt Elev **695**

RNAV (GPS) RWY 36

GREEN BAY-AUSTIN STRAUBEL INTL (GRB)

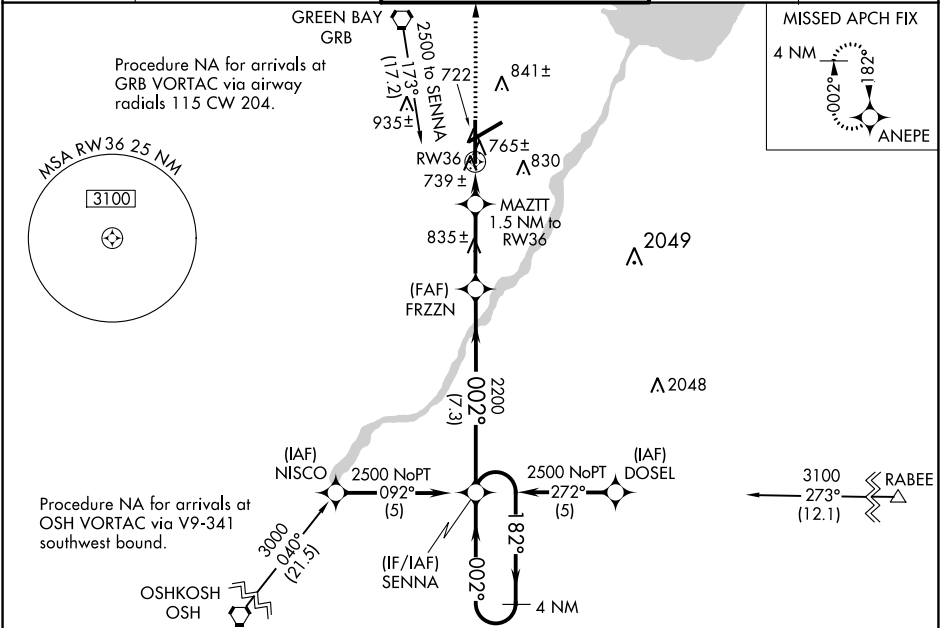
ASR

For uncompensated Baro-VNAV systems, LNAV/VNAV NA below -16°C (4°F) or above 47°C (116°F).
DME/DME RNP-0.3 NA.
Inoperative table does not apply to LNAV Cat D.

MALSR

MISSED APPROACH: Climb to 2500 direct ANEPE and hold.

ATIS 124.1	GREEN BAY APP CON* 119.4 338.2	GREEN BAY TOWER* 118.7 (CTAF) 0 257.8	GND CON 121.9	CLNC DEL 121.75
----------------------	--	---	-------------------------	---------------------------



ELEV 695

D

TDZE 684

REIL Rwy 18
HIRL Rwys 6-24 and 18-36

2500 ANEPE

*LNAV only

MAZTT 1.5 NM to RW36

FRZZN

SENNA

4 NM Holding Pattern

182° → 2500

← 002°

GP 3.00° TCH 50

*0.9 NM to RW36

*1200

0.9 0.6 NM → 3.1 NM → 7.3 NM

CATEGORY	A	B	C	D
LPV DA	884/24 200 (200-½)			
LNAV/VNAV DA	1097/50 413 (500-1)			
LNAV MDA	1020/24 336 (400-½)			1020/50 336 (400-1)
CIRCLING	1200-1 505 (600-1)		1200-1½ 505 (600-1½)	1260-2 565 (600-2)