

WAAS CH 99515 W24A	APP CRS 242°	Rwy Idg 7699 TDZE 681 Apt Elev 695
--	------------------------	---

RNAV (GPS) RWY 24

GREEN BAY-AUSTIN STRAUBEL INTL (GRB)

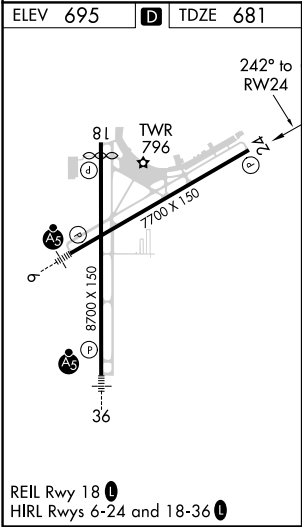
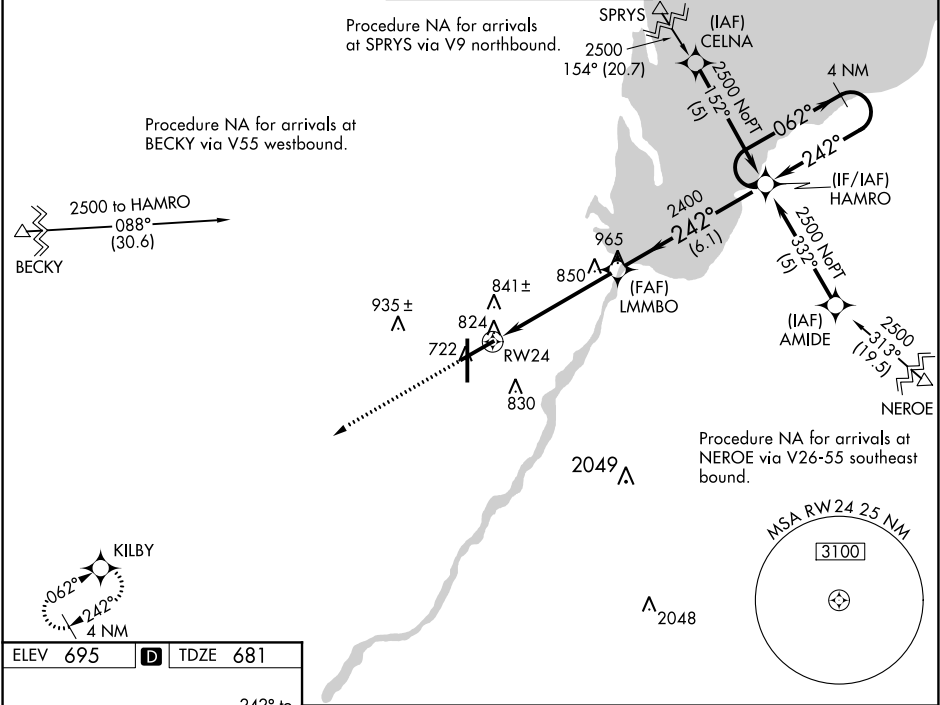
▼

ASR

For uncompensated Baro-VNAV systems, LNAV/VNAV
NA below -16° C (4° F) or above 47°C (116°F).
DME/DME RNP-0.3 NA.

MISSED APPROACH: Climb to 2500 direct KILBY
and hold.

ATIS 124.1	GREEN BAY APP CON ★ 119.4 338.2	GREEN BAY TOWER ★ 118.7 (CTAF) 257.8	GND CON 121.9	CLNC DEL 121.75
----------------------	---	--	-------------------------	---------------------------



2500

↑

KILBY

✧

4 NM

Holding Pattern

* LNAV only

LMMBO

HAMRO

062°

2500

← 242°

242°

2400

GP 3.00°

TCH 50

1.2 NM

4 NM

6.1 NM

RW24

* 1.2 NM to RW24

CATEGORY	A	B	C	D
LPV DA	970-1 289 (300-1)			
LNAV/VNAV DA	1143-1½ 462 (500-1½)			
LNAV MDA	1100-1	419 (500-1)	1100-1¼	419 (500-1¼)
CIRCLING	1200-1	505 (600-1)	1200-1½ 505 (600-1½)	1260-2 565 (600-2)