

WAAS CH 42802 W18A	APP CRS 182°	Rwy Idg TDZE Apt Elev	8201 695 695
----------------------------------------	------------------------	-----------------------------	-----------------------------------------

RNAV (GPS) RWY 18

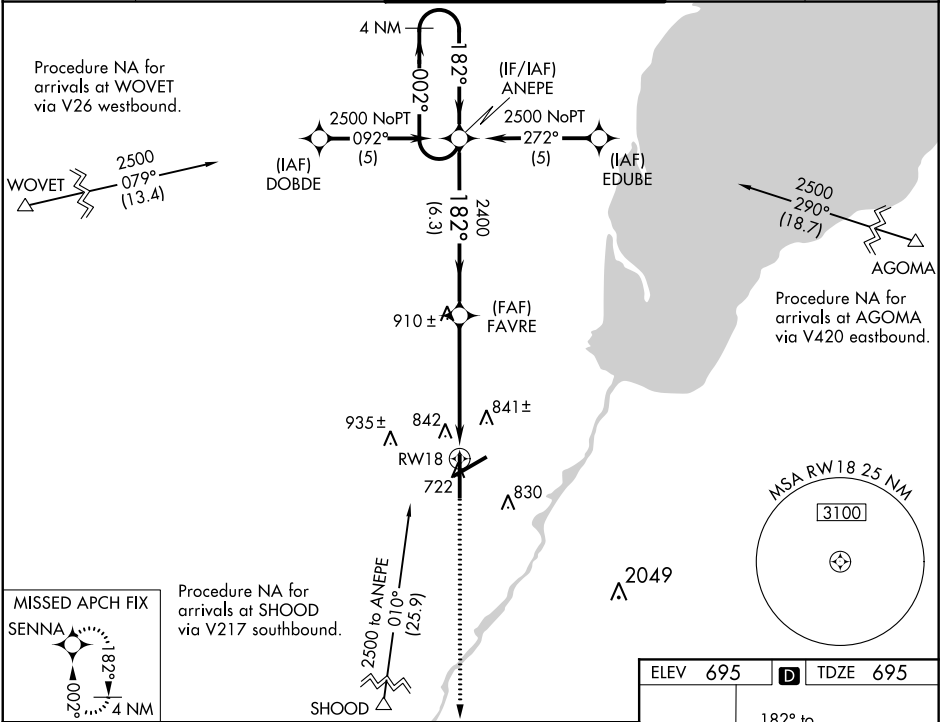
GREEN BAY-AUSTIN STRAUBEL INTL (GRB)

ASR

For uncompensated Baro-VNAV systems, LNAV/VNAV NA below -16° C (4° F) or above 47° C (117° F). DME/DME RNP-0.3 NA.
Visibility reduction by helicopters NA.

MISSED APPROACH: Climb to 2500 direct SENNA and hold.

ATIS 124.1	GREEN BAY APP CON★ 119.4 338.2	GREEN BAY TOWER★ 118.7 (CTAF) 0 257.8	GND CON 121.9	CLNC DEL 121.75
----------------------	------------------------------------------	-------------------------------------------------	-------------------------	---------------------------



4 NM Holding Pattern

ANEPE

FAVRE

2500

GP 3.00°
TCH 50

2400

6.3 NM

3.8 NM

1.3 NM

2500

↑

2500

✱

SENN

← 002°

182° →

182°

*1.3 NM to RW18

RW18

*LNAV only

CATEGORY	A	B	C	D
LPV DA	979-1 284 (300-1)			
LNAV/VNAV DA	1187-1¾ 492 (500-1¾)			
LNAV MDA	1160-1	465 (500-1)	1160-1¼ 465 (500-1¼)	1160-1½ 465 (500-1½)
CIRCLING	1200-1	505 (600-1)	1200-½ 505 (600-½)	1260-2 565 (600-2)

