

WAAS CH 61210 W31A	APP CRS 313°	Rwy Idg 5146 TDZE 769 Apt Elev 769
----------------------------------------	------------------------	---------------------------------------------------------------

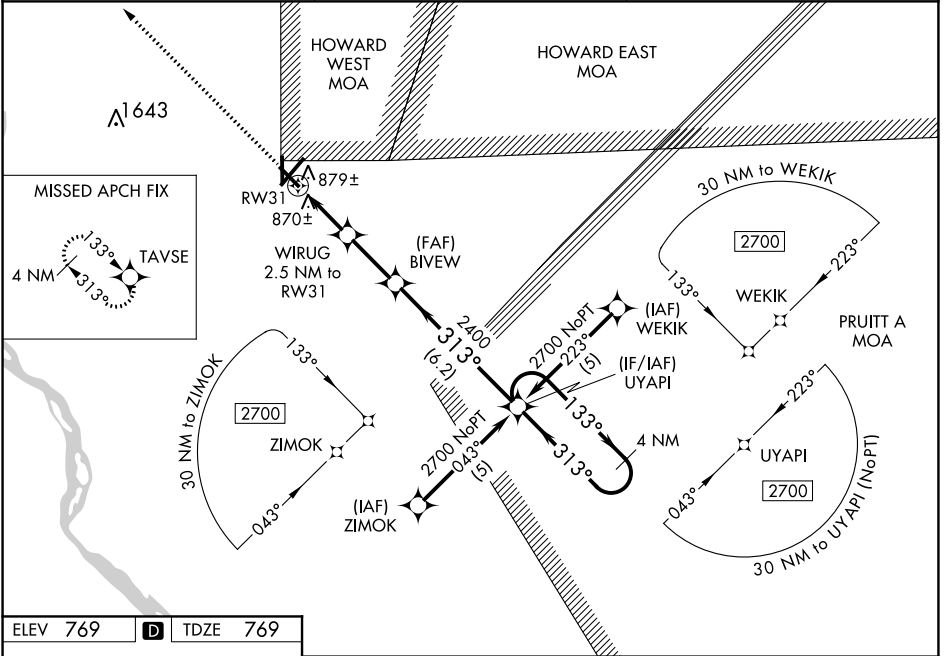
RNAV (GPS) RWY 31

QUINCY RGNL-BALDWIN FIELD (UIN)

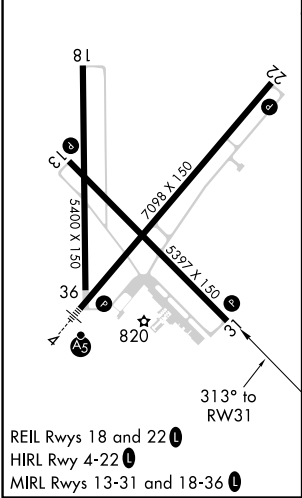
For uncompensated Baro-VNAV systems, LNAV/VNAV NA below -16° C (4° F) or above 47° C (116° F). DME/DME RNP-0.3 NA. Visibility reduction by helicopters NA. When local altimeter setting not received, use Pittsfield altimeter setting and increase all DA 70 feet and all MDA 80 feet. Increase LPV and LNAV/VNAV visibility all Cats. ¼ mile. Increase LNAV visibility Cat. C, D ¼ mile. VDP and Baro-VNAV NA when using Pittsfield altimeter setting.

MISSED APPROACH:
Climb to 2700 direct
TAVSE and hold

ASOS 121.425	KANSAS CITY CENTER 126.225 317.775	UNICOM 123.0 (CTAF) 0
------------------------	----------------------------------------------	---------------------------------



ELEV 769	D	TDZE 769
-----------------	----------	-----------------



2700 ↑	TAYSE ✧	4 NM Holding Pattern			
* LNAV only		WIRUG 2.5 NM to RW31	BIVEW	UYAPI	133° → ← 313° 2700
* 1 NM to RW31		GP 3.00° TCH 40			
RW31					
1 NM		1.5 NM	2.4 NM	6.2 NM	
CATEGORY	A	B	C	D	
LPV DA	1057-1 288 (300-1)				
LNAV/ VNAV DA	1168-1½ 399 (400-1½)				
LNAV MDA	1140-1 371 (400-1)			1140-1¼ 371 (400-1¼)	
CIRCLING	1180-1 411 (500-1)	1220-1 451 (500-1)	1220-1½ 451 (500-1½)	1320-2 551 (600-2)	