

WAAS CH <b>56510</b> <b>W18A</b>	APP CRS <b>177°</b>	Rwy Idg <b>5400</b> TDZE <b>760</b> Apt Elev <b>769</b>
--	------------------------	---

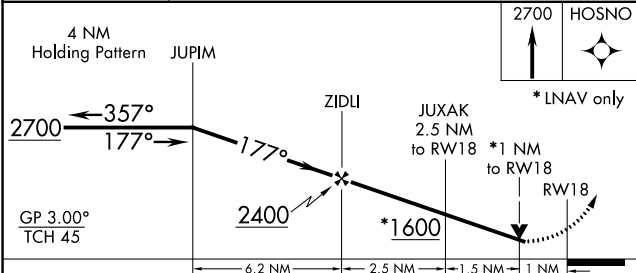
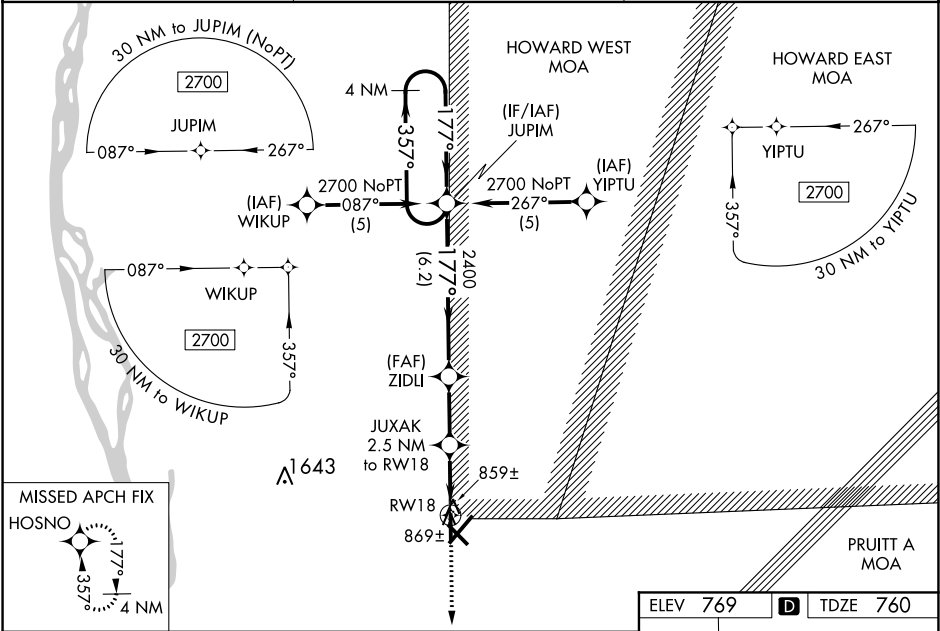
**RNAV (GPS) RWY 18**  
QUINCY RGNL-BALDWIN FIELD (UIN)

**▼** Baro-VNAV NA when using Pittsfield altimeter setting. For uncompensated Baro-VNAV systems, LNAV/VNAV NA below -16° C (4° F) or above 47° C (116° F). DME/DME RNP-0.3 NA.

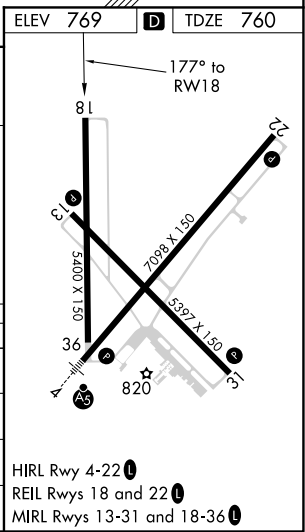
**▲** Visibility reduction by helicopters NA. When local altimeter setting not received, use Pittsfield altimeter setting and increase all DA 70 feet and all MDA 80 feet. Increase LPV and LNAV/VNAV visibility all Cats. ¼ mile. Increase LNAV visibility Cats. C, D ¼ mile. VDP NA when using Pittsfield altimeter setting.

**MISSED APPROACH:**  
Climb to 2700 direct HOSNO and hold.

ASOS <b>121.425</b>	KANSAS CITY CENTER <b>126.225 317.775</b>	UNICOM <b>123.0 (CTAF) 0</b>
------------------------	--	---------------------------------



CATEGORY	A	B	C	D
LPV DA	1115-1¼	355 (400-1¼)		
LNAV/VNAV DA	1129-1¼	369 (400-1¼)		
LNAV MDA	1120-1	360 (400-1)		1120-1¼ 360 (400-1¼)
CIRCLING	1180-1 411 (500-1)	1220-1 451 (500-1)	1220-1½ 451 (500-1½)	1320-2 551 (600-2)



EC-3, 03 DEC 2020 to 31 DEC 2020

EC-3, 03 DEC 2020 to 31 DEC 2020