

WAAS CH <b>65910</b> <b>W13A</b>	APP CRS <b>133°</b>	Rwy Idg <b>5123</b> TDZE <b>767</b> Apt Elev <b>769</b>
--	------------------------	---

RNAV (GPS) RWY 13

QUINCY RGNL-BALDWIN FIELD (UIN)

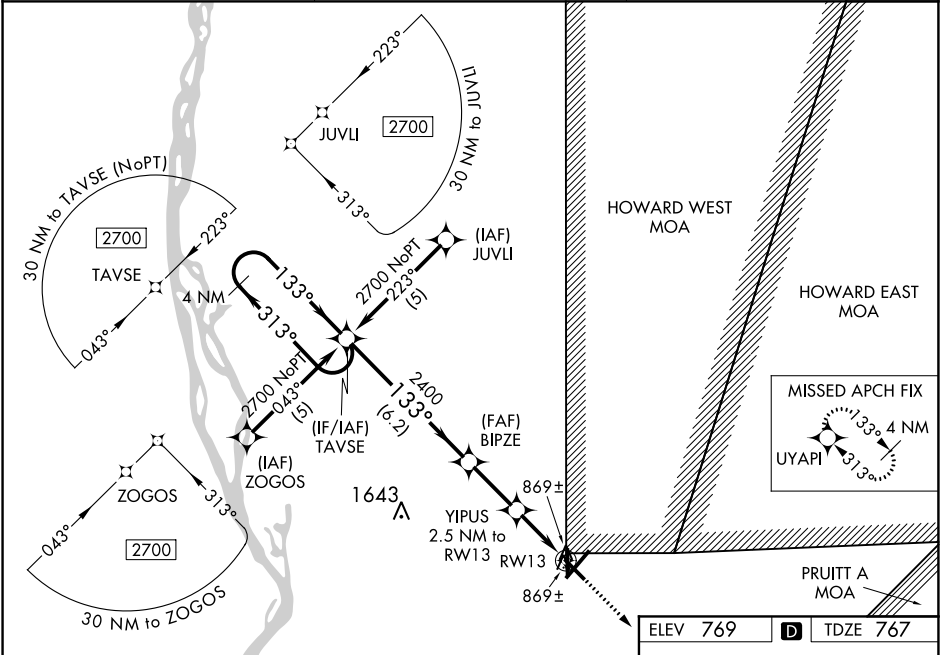
▼

▲

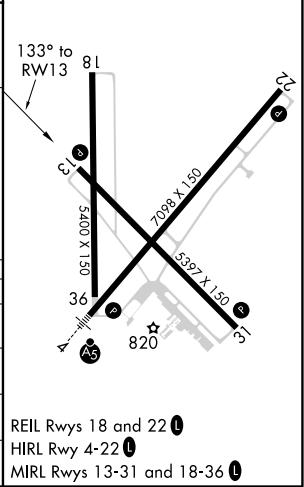
For uncompensated Baro-VNAV systems, LNAV/VNAV NA below -16° C (4° F) or above 47° C (116° F). DME/DME RNP-0.3 NA. When local altimeter setting not received, use Pittsfield altimeter setting and increase all DA 70 feet and all MDA 80 feet. Increase LPV and LNAV/VNAV visibility all Cats. ¼ mile. Increase LNAV visibility Cat. C, D ¼ mile. VDP and Baro-VNAV NA when using Pittsfield altimeter setting.

MISSED APPROACH:  
Climb to 2700 direct UYAPI and hold.

ASOS <b>121.425</b>	KANSAS CITY CENTER <b>126.225 317.775</b>	UNICOM <b>123.0 (CTAF) 0</b>
------------------------	--	---------------------------------



4 NM Holding Pattern		VGSI and RNAV glidepath not coincident (VGSI Angle 3.00/TCH 33).		2700 UYAPI	
TAVSE		BIPZE		* LNAV only	
2700 ← 313°		YIPUS 2.5 NM to RW13		133° to RW13	
133° →		* 1 NM to RW13		81	
GP 3.00° TCH 45		* 1600		5400 X 150	
6.2 NM		2.4 NM		708 X 150	
1.5 NM		1 NM		5397 X 150	
CATEGORY	A	B	C	D	
LPV DA	1116-1¼		349 (400-1¼)		
LNAV/ VNAV DA	1139-1¼		372 (400-1¼)		
LNAV MDA	1120-1		353 (400-1)		1120-1¼ 353 (400-1¼)
CIRCLING	1180-1 411 (500-1)	1220-1 451 (500-1)	1220-1½ 451 (500-1½)	1320-2 551 (600-2)	



EC-3, 03 DEC 2020 to 31 DEC 2020

EC-3, 03 DEC 2020 to 31 DEC 2020