

APP CRS
181°

Rwy Idg
TDZE
534

Apt Elev
537

RNAV (GPS) RWY 18

VANDALIA MUNI (VLA)

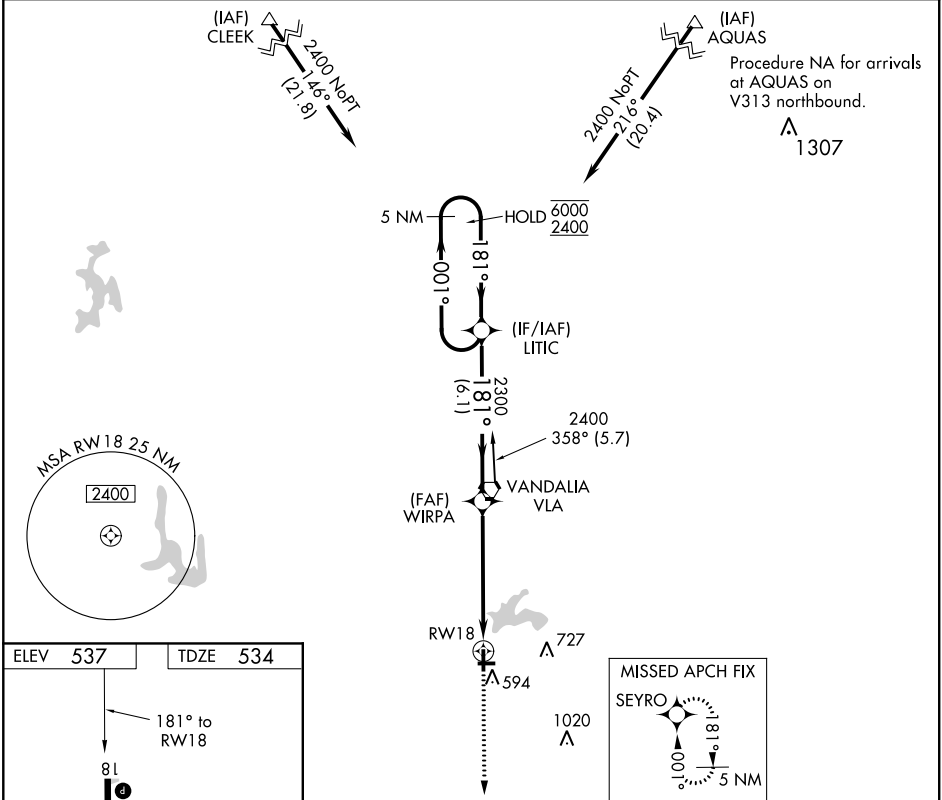
RNP APCH.

▼

Rwy 18 helicopter visibility reduction below ¾ SM NA. When local altimeter setting not received, use Salem altimeter setting and increase all MDAs 60 feet, increase LNAV Cats C/D and Circling Cat C visibility ¼ SM.

MISSED APPROACH: Climb to 2400 direct SEYRO and hold.

AWOS-A 122.8	SLO AWOS-3 118.525	KANSAS CITY CENTER 124.3 269.15	UNICOM 122.8 (CTAF) 0
------------------------	------------------------------	---	---------------------------------



ELEV 537

TDZE 534

181° to RW18

81

3751 X 100

3001 X 75

6

27

36

582

REIL Rws 18, 27 and 36 0

MIRL Rws 9-27 and 18-36 0

2400

SEYRO

VGSI and descent angles not coincident (VGSI Angle 3.00/TCH 20).

5 NM Holding Pattern

LITIC

001°

181°

6000

2400

1.6 NM to RW18

WIRPA

181°

2300

3.05°

TCH 40

1.6 NM

3.8 NM

6.1 NM

CATEGORY	A	B	C	D
LNAV MDA	1060-1	526 (600-1)	1060-1½	526 (600-1½)
CIRCLING	1060-1	523 (600-1)	1060-1½	1140-2
			523 (600-1½)	603 (700-2)

EC-3, 03 DEC 2020 to 31 DEC 2020

EC-3, 03 DEC 2020 to 31 DEC 2020