

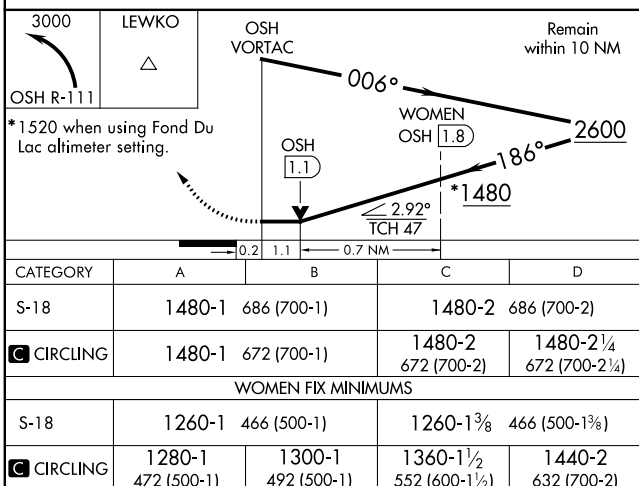
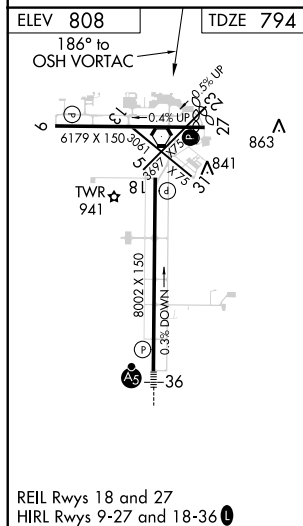
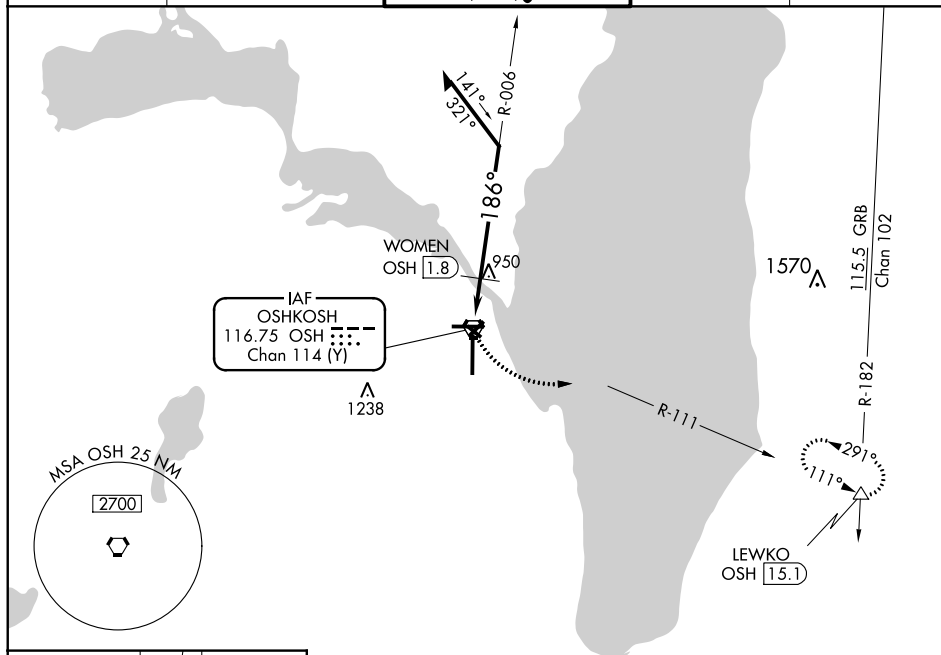
VORTAC OSH 116.75 Chan 114 (Y)	APP CRS 186°	Rwy Idg TDZE Apt Elev	8002 794 808
--	------------------------	-----------------------------	---

VOR RWY 18
WITTMAN RGNL (OSH)

- T** Circling to Rwy 5, 23, and 31 NA at night. VDP NA with Fond Du Lac County
A altimeter setting. When local altimeter setting not received, use Fond Du Lac
 altimeter setting and increase all MDA 40 feet; increase WOMEN fix minimums
 Circling Cat D visibility $\frac{1}{4}$ mile. Helicopter visibility reduction below $\frac{3}{4}$ SM NA.

MISSED APPROACH: Climbing left turn to 3000 on OSH VORTAC R-111 to LEWKO INT/OSH 15.1 DME and hold.

ATIS 125.9	MILWAUKEE APP CON 127.0 263.075	OSHKOSH TOWER ★ 118.5(CTAF) 0 290.9	GND CON 132.3	UNICOM 122.95
---------------	------------------------------------	--	------------------	------------------



OSHKOSH, WISCONSIN
Amdt 8B 21JUL16

WITTMAN RGNL (OSH)
VOR RWY 18

43°59'N-88°33'W