

WAAS CH <b>93534</b> <b>W27A</b>	APP CRS <b>274°</b>	Rwy Idg TDZE <b>786</b> Apt Elev <b>808</b>
--	------------------------	---

RNAV (GPS) RWY 27

WITTMAN RGNL (OSH)

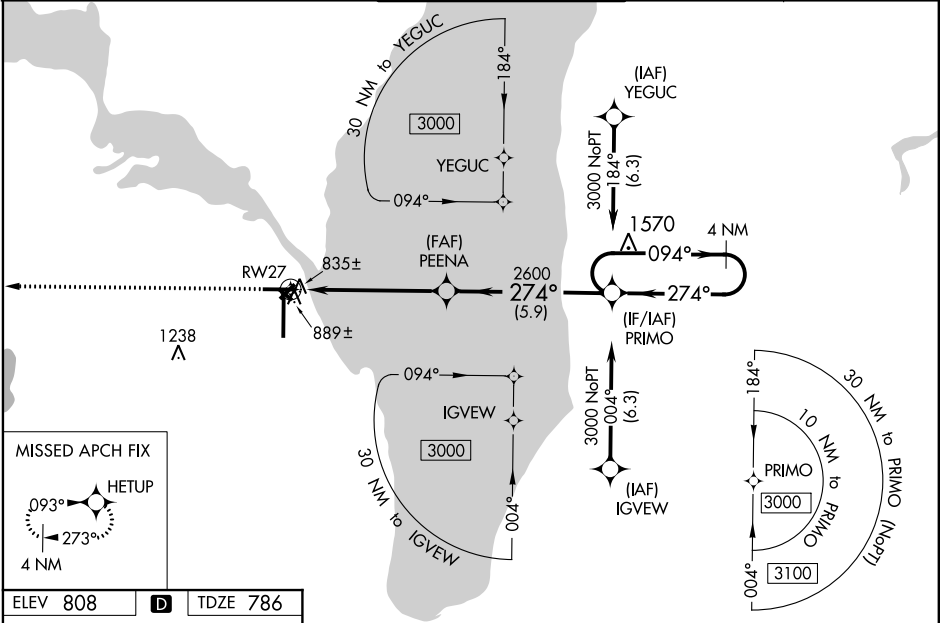
⚠

⚠

For uncompensated Baro-VNAV systems, LNAV/VNAV NA below -20°C (-4°F) or above 54°C (130°F). DME/DME RNP-0.3 NA. When local altimeter setting not received, use Fond Du Lac altimeter setting and increase all DA 31 feet and all MDA 40 feet; increase LPV and LNAV/VNAV all Cats visibility and LNAV Cats C and D visibility ½ mile, increase Circling Cat D ¼ mile, Baro-VNAV and VDP NA with Fond Du Lac altimeter setting. Circling to Rwy 5, 23, and 31 NA at night. Helicopter visibility reduction below ¾ SM NA.

MISSED APPROACH:  
Climb to 3000 direct HETUP and hold.

ATIS <b>125.9</b>	MILWAUKEE APP CON <b>127.0 263.075</b>	OSHKOSH TOWER ★ <b>118.5 (CTAF) 0 290.9</b>	GND CON <b>132.3</b>	UNICOM <b>122.95</b>
----------------------	---	--	-------------------------	-------------------------



ELEV 808

D

TDZE 786

3000 HETUP

\*LNAV only.

1 NM to RWY 27

PEENA 2600

PRIMO 4 NM Holding Pattern

094° to 274°

274° to 3000

GP 3.00° TCH 47

1 NM 4.6 NM 5.9 NM

CATEGORY	A	B	C	D
LPV DA		1036-¾	250 (300-¾)	
LNAV/VNAV DA		1078-1	292 (300-1)	
LNAV MDA		1140-1	354 (400-1)	
CIRCLING	1280-1 472 (500-1)	1300-1 492 (500-1)	1360-1½ 552 (600-1½)	1440-2 632 (700-2)