

WAAS	APP CRS	Rwy Idg	8002
CH 58333	184°	TDZE	794
W18A		Apt Elev	808

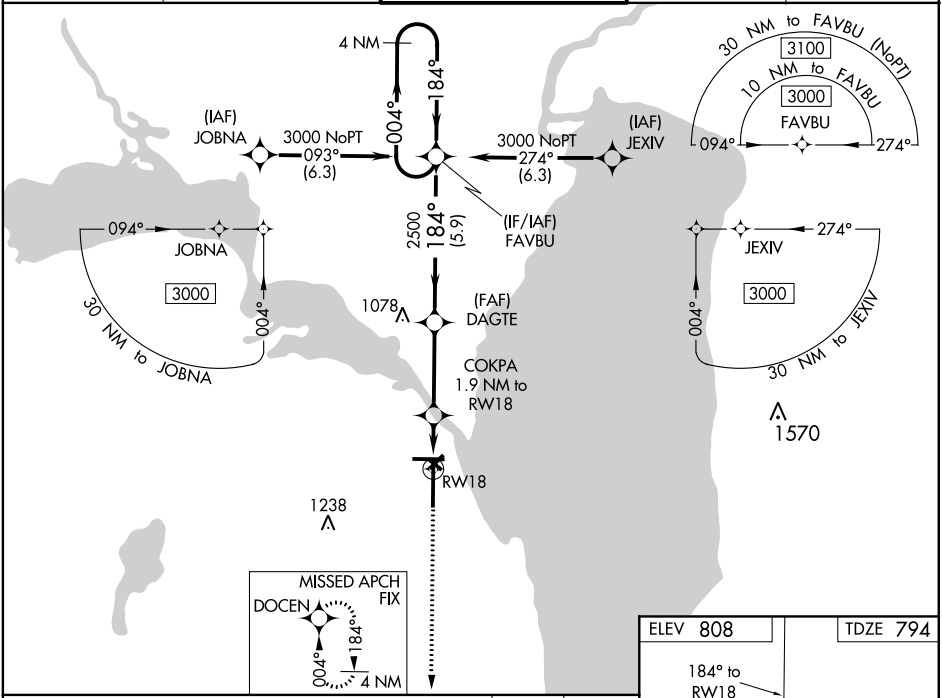
RNAV (GPS) RWY 18

WITTMAN RGNL (OSH)

⚠ For uncompensated Baro-VNAV systems, LNAV/VNAV NA below -20°C (-4°F) or above 54°C (130°F). VDP and Baro-VNAV NA when using Fond Du Lac altimeter setting. When local altimeter setting not received, use Fond Du Lac altimeter setting and increase all DA 31 feet and all MDA 40 feet; increase LPV and LNAV/VNAV all Cats visibility 1/8 mile, increase LNAV Cat C/D and Circling Cat D visibility 1/4 mile. Helicopter visibility reduction below 3/4 SM NA. Circling to Rwy 5, 23 and 31 NA at night. DME/DME RNP-0.3 NA.

MISSED APPROACH:
Climb to 2800 direct
DOCEN and hold.

ATIS	MILWAUKEE APP CON	OSHKOSH TOWER ★	GND CON	UNICOM
125.9	127.0 263.075	118.5(CTAF) 290.9	132.3	122.95



4 NM Holding Pattern		FAVBU	DAGTE	COKPA	2800	DOCEN
3000		184°	2500	1.9 NM to RW18	↑	★
GP 3.00° TCH 47		184°	*1440	*1.1 NM to RW18	*LNAV only.	
		5.9 NM	3.3 NM	0.8 NM	1.1 NM	
CATEGORY	A	B	C	D		
LPV DA	1044-3/4		250 (300-3/4)			
LNAV/VNAV DA	1122-1 1/8		328 (400-1 1/8)			
LNAV MDA	1200-1	406 (400-1)	1200-1 1/8	406 (400-1 1/8)		
CIRCLING	1280-1 472 (500-1)	1300-1 492 (500-1)	1360-1 1/2 552 (600-1 1/2)	1440-2 632 (700-2)		

