

LOM OS

395

APP CRS

003°

Rwy Idg

8002

TDZE

808

Apt Elev

808

NDB RWY 36

WITTMAN RGNL (OSH)

▼

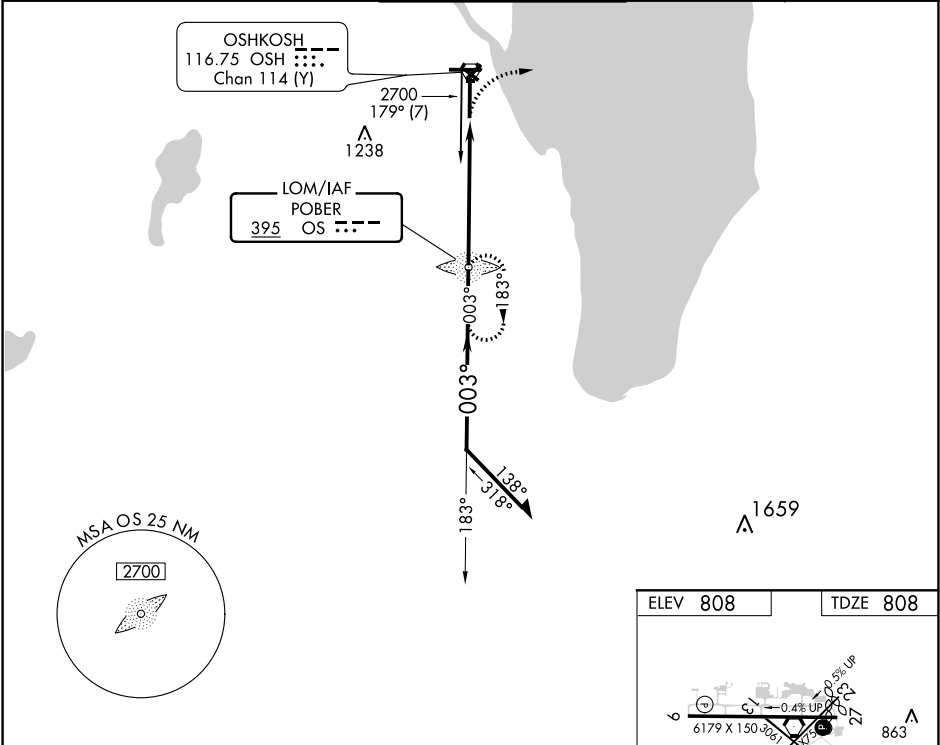
▲NA

When local altimeter setting not received, use Fond Du Lac altimeter setting and increase all MDA 40 feet; increase S-36 Cat C/D and Circling Cat C visibilities ½ mile, increase Circling Cat D visibility ¼ mile. For inop MALSR, increase S-36 Cat D visibility to 1½ mile. For inop MALSR when using Fond Du Lac altimeter setting, increase S-36 Cat D visibility to 2 miles. Circling to Rwy 5, 23, and 31 NA at night.

MALSR

MISSED APPROACH:  
Climbing right turn to 3000 on heading 090° then right turn direct POBER LOM and hold.

ATIS	MILWAUKEE APP CON	OSHKOSH TOWER ★	GND CON	UNICOM
125.9	127.0 263.075	118.5 (CTAF) 290.9	132.3	122.95



Remain within 10 NM

3000

hdg 090°

OS

CATEGORY	A	B	C	D
S-36	1460/40	652 (700-¾)	1460-1 ¾	652 (700-1 ½)
CIRCLING	1460-1	652 (700-1)	1460-1 ¾	1460-2
			652 (700-1 ¾)	652 (700-2)

ELEV 808

TDZE 808

REIL Rwy 18 and 27

HIRL Rwy 9-27 and 18-36

FAF to MAP 5.4 NM

Knots 60 90 120 150 180

Min:Sec 5:24 3:36 2:42 2:10 1:48