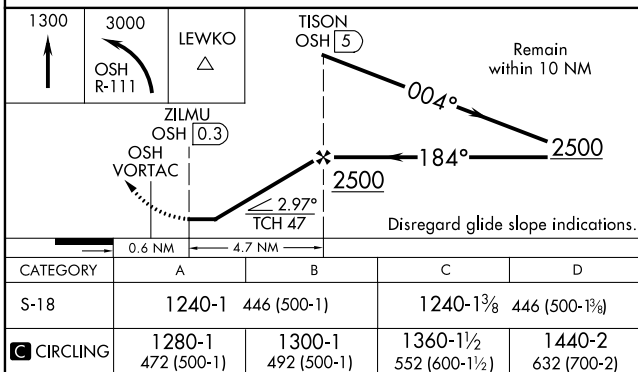
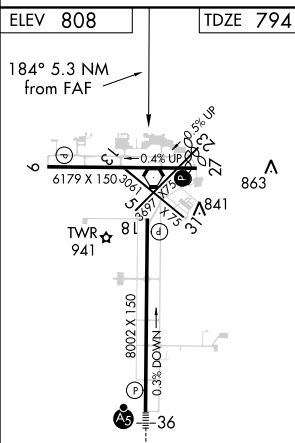
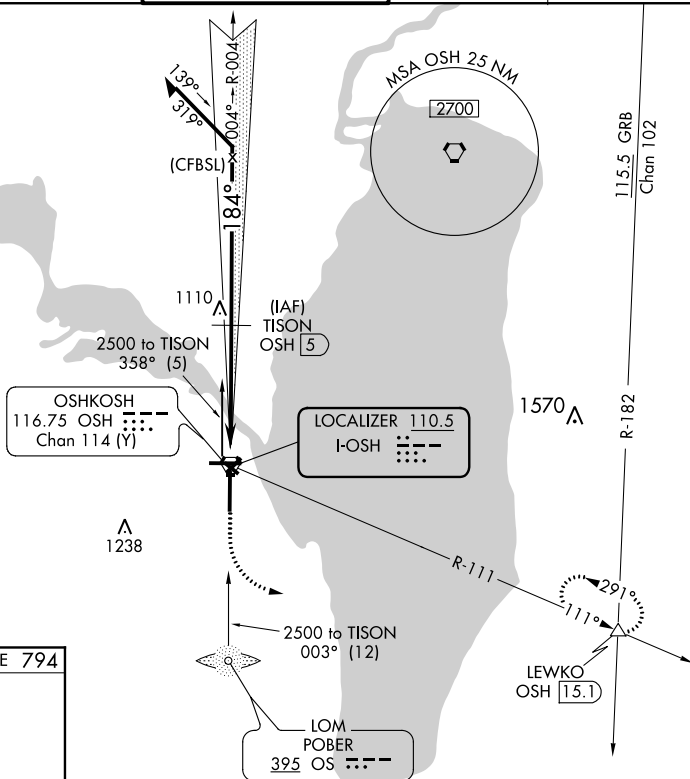


LOC/DME BC RWY 18
WITTMAN RGNL (OSH)

MISSED APPROACH: Climb to 1300 then climbing left turn to 3000 on OSH R-111 to LEWKO INT/OSH 15.1 DME and hold.

UNICOM
122.95

BACK COURSE



WITTMAN RGNL (OSH)
LOC/DME BC RWY 18