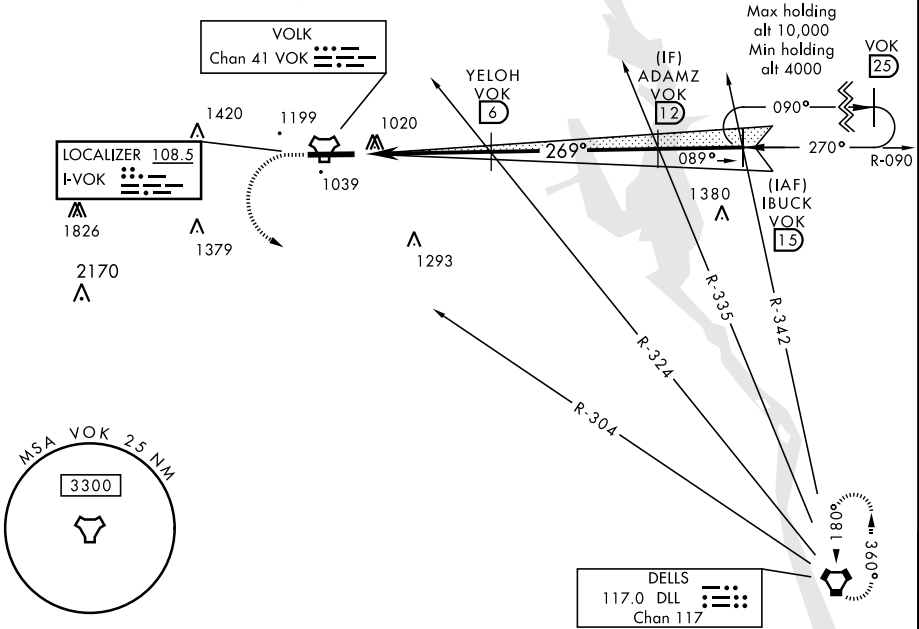
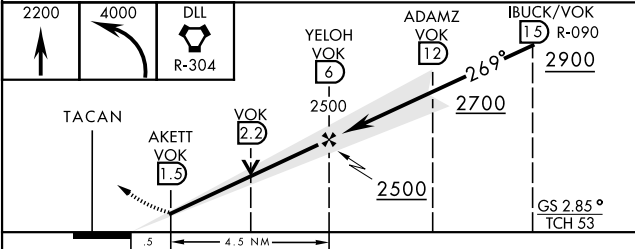


| | | | | |
|--|---------------------------------------|---|-------------------------------|--|
| LOC I-VOK 108.5 | APCH CRS 269° | Rwy Idg THRE Arpt Elev 9000 904 912 | AL-714 [USAF] | VOLK FIELD (KVOK) |
| * When ALS inop, increase vis to ¾ mile. ** When ALS inop, increase CAT AB vis to 1 mile, CAT CDE vis to 1½ miles. | | | ALSF-1 | MISSED APPROACH: Climb to 2200, then climbing left turn to 4000 via DLL VORTAC R-304 direct DLL and hold. |
| ATIS 134.35 257.85 | VOLK APP CON 135.25 244.875 | VOLK TOWER ★ 127.5 0 (CTAF) 239.25 0 | GND CON 121.9 275.8 | |

*** Circling NA South
of Rwy 9-27.



EMERG SAFE ALT 100 NM 4200



| | |
|---|--------------------------|
| ELEV 912 | THRE 904 |
| <p>Diagram of runway 27 with taxiway 27, tower, and navigation aids. Includes altitudes (1262, 269° from FAF) and distances (9000 x 150).</p> | |
| HIRL Rwy 9-27 0 | |
| FAF to MAP 4.5 NM | |
| Knots | 60 90 120 150 180 |
| Min:Sec | 4:30 3:00 2:15 1:48 1:30 |

| CATEGORY | A | B | C | D | E |
|--------------|-----------------------|-----------------------|-------------------------|-----------------------|-------------------------|
| S-ILS 27 * | 1104/24 | | 200 | (200-½) | |
| S-LOC 27 ** | 1320/24 | 416 (500-½) | 1320/40 | 416 (500-¾) | |
| CIRCLING *** | 1400-1 488 (500-1) | 1500-1 588 (600-1) | 1500-1½ 588 (600-1½) | 1500-2 588 (600-2) | 1580-2¼ 668 (700-2¼) |