

WAAS CH 93738 W24A	APP CRS 240°	Rwy Idg TDZE 682 Apt Elev 682
--	------------------------	---

RNAV (GPS) RWY 24
DECATUR (DEC)

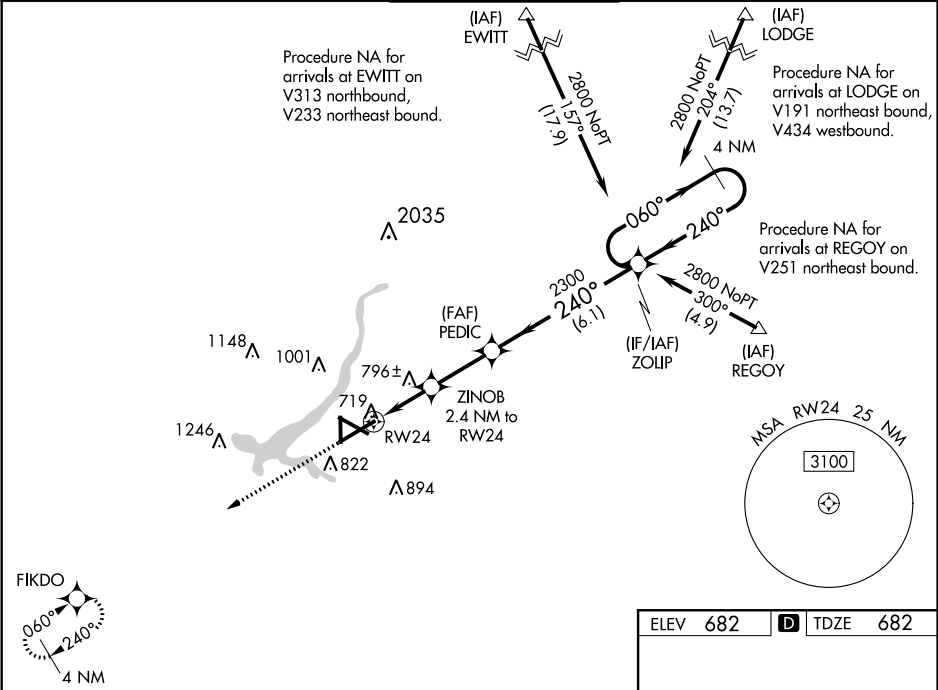
RNP APCH.

▼ For uncompensated Baro-VNAV systems, LNAV/VNAV NA below -19°C or above 54°C.
Baro-VNAV and VDP NA when using Logan County altimeter setting.

▲ When local altimeter setting not received, use Logan County altimeter setting; increase LPV DA to 1012 feet and visibility all Cats ¼ mile, LNAV/VNAV DA to 1168 feet and visibility all Cats ¼ mile; increase all MDA 80 feet and LNAV visibility Cats C/D ¾ mile, Circling visibility Cats C/D ¼ mile.

MISSED APPROACH:
Climb to 2300 direct
FIKDO and hold.

ATIS 126.35	CHAMPAIGN APP CON* 132.85 290.225	DECATUR TOWER* 118.9 (CTAF) 0 291.775	GND CON 121.75 291.775	UNICOM 122.95
-----------------------	---	---	----------------------------------	-------------------------



2300

FIKDO

*LNAV only.

RW24

1 NM

1.4 NM

2.5 NM

6.1 NM

ZINOB

2.4 NM to RW24

PEDIC

2300

ZOLIP

4 NM Holding Pattern

240°

060°

2800

GP 3.00° TCH 52

CATEGORY	A	B	C	D
LPV DA		932-¾	250 (300-¾)	
LNAV/VNAV DA		1088-1⅜	406 (500-1⅝)	
LNAV MDA		1060-1	378 (400-1)	
CIRCLING	1140-1 458 (500-1)	1240-1 558 (600-1)	1360-2 678 (700-2)	1360-2¼ 678 (700-2¼)

ELEV 682 TDZE 682

81

6799 X 150

752

5298 X 150

8496 X 150

36

REIL Rwy 36
HIRL Rwy 6-24
MIRL Rws 12-30 and 18-36

EC-3, 03 DEC 2020 to 31 DEC 2020

EC-3, 03 DEC 2020 to 31 DEC 2020