

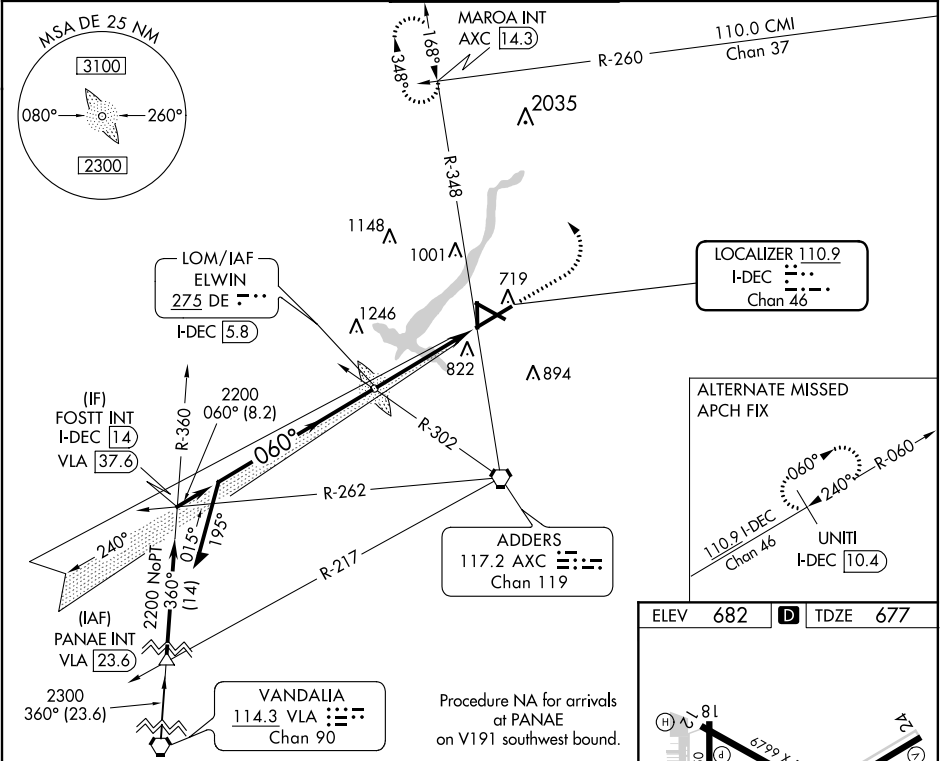
LOC/DME I-DEC	APP CRS	Rwy Idg	8496
110.9	060°	TDZE	677
Chan 46		Apt Elev	682

ILS or LOC RWY 6  
DECATUR (DEC)

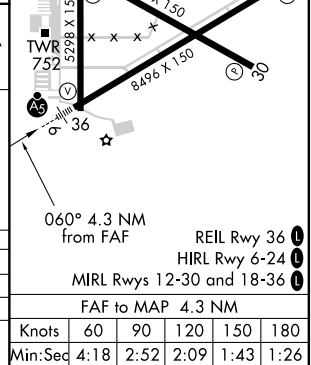
When local altimeter setting not received use Lincoln altimeter setting and increase all DA/MDA 80 feet, increase S-LOC 6 Cat C/D visibility to RVR 6000 and Circling Cat C/D visibility 1/4 SM. For inop ALS, increase S-LOC 6 Cat C/D visibility to 1 1/2 SM. For inop ALS when using Lincoln altimeter setting increase S-ILS 6 all Cats visibility to RVR 4500. VDP NA with Lincoln altimeter setting. # RVR 1800 authorized with the use of FD or AP or HUD to DA (NA when using Lincoln altimeter setting).

MALSR  
MISSED APPROACH: Climb to 2200 then climbing left turn to 3100 on heading 270° and AXC VORTAC R-348 to MAROA INT/AXC 14.3 DME and hold.

ATIS 126.35	CHAMPAIGN APP CON* 132.85 290.225	DECATUR TOWER* 118.9(CTAF) 291.775	GND CON 121.75 291.775	UNICOM 122.95
----------------	--------------------------------------	---------------------------------------	---------------------------	------------------



CATEGORY	A	B	C	D
S-ILS 6 #	877/24		200 (200-1/2)	
S-LOC 6	1140/24	463 (500-1/2)	1140/50	463 (500-1)
CIRCLING	1140-1 458 (500-1)	1240-1 558 (600-1)	1360-2 678 (700-2)	1360-2 1/4 678 (700-2 1/4)



EC-3, 03 DEC 2020 to 31 DEC 2020

EC-3, 03 DEC 2020 to 31 DEC 2020