

VORTAC CMI

110.0

Chan 37

APP CRS

207°

Rwy Idg

6501

TDZE

750

Apt Elev

755

VOR RWY 22

UNIVERSITY OF ILLINOIS-WILLARD (CMI)

DME required.

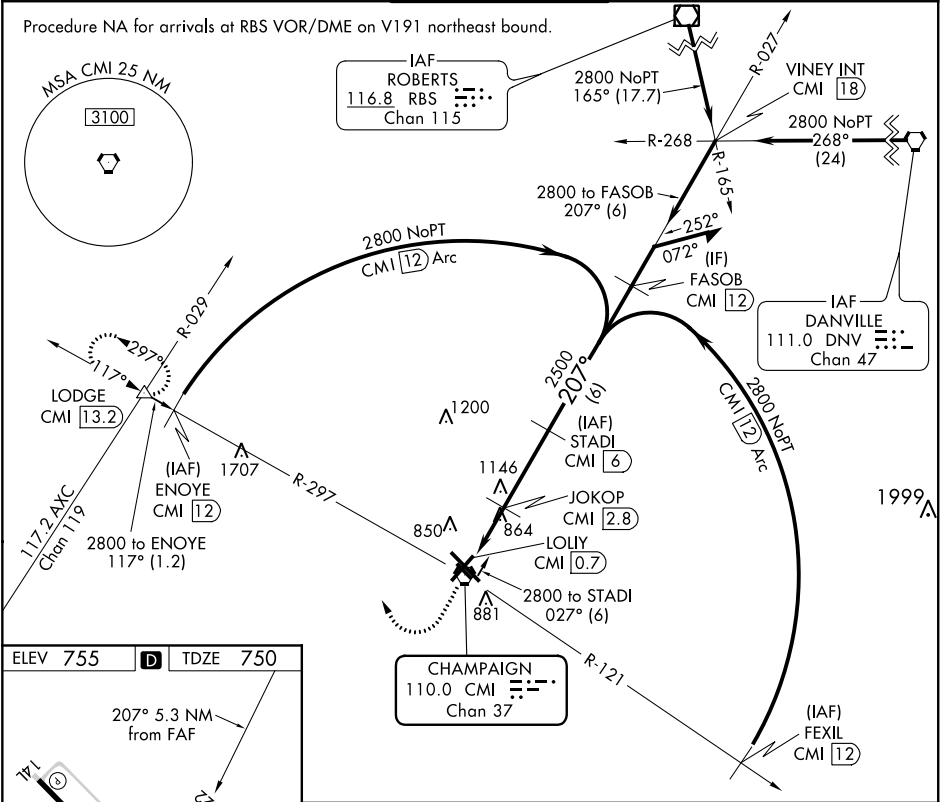
⚠

ASR

Rwy 22 helicopter visibility reduction below ¾ SM NA.

MISSED APPROACH: Climb to 2800 then right turn heading 340° and CMI VOR R-297 to LODGE INT/CMI 13.2 DME and hold.

ATIS	CHAMPAIGN APP CON ★	CHAMPAIGN TOWER ★	GND CON	CLNC DEL	UNICOM
124.85	121.35 285.65 (319°-138°) 132.85 290.225 (139°-318°)	120.4 (CTAF) 229.4	121.8	128.75	122.95



Aeronautical chart showing runway layout and navigation aids. Runway 14L-32R is 8102 x 150 feet. Runway 4-22 is 6501 x 95 feet. Runway 14R-32L is 3817 x 73 feet. A TWR 825 is located near the intersection. A 32R marker is shown at the end of runway 14R-32L. A star symbol is located near runway 14L-32R.

HIRL Rwy 14L-32R 1  
MIRL Rwy 4-22 1  
MIRL Rwy 14R-32L

Aeronautical chart showing approach procedure and obstacle clearance. The chart includes a heading of 340° and a CMI R-297. The approach is for LODGE. The chart shows a 2800 foot obstacle at 3.40° heading. The approach is for STADI CMI 6. The approach is for LODGE.