

| | | |
|--|------------------------|---|
| WAAS CH 61110 W32A | APP CRS 319° | Rwy Idg TDZE 750 Apt Elev 755 |
|--|------------------------|---|

RNAV (GPS) RWY 32R

UNIVERSITY OF ILLINOIS-WILLARD (CMI)

⚠

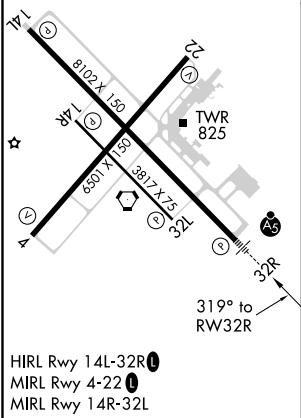
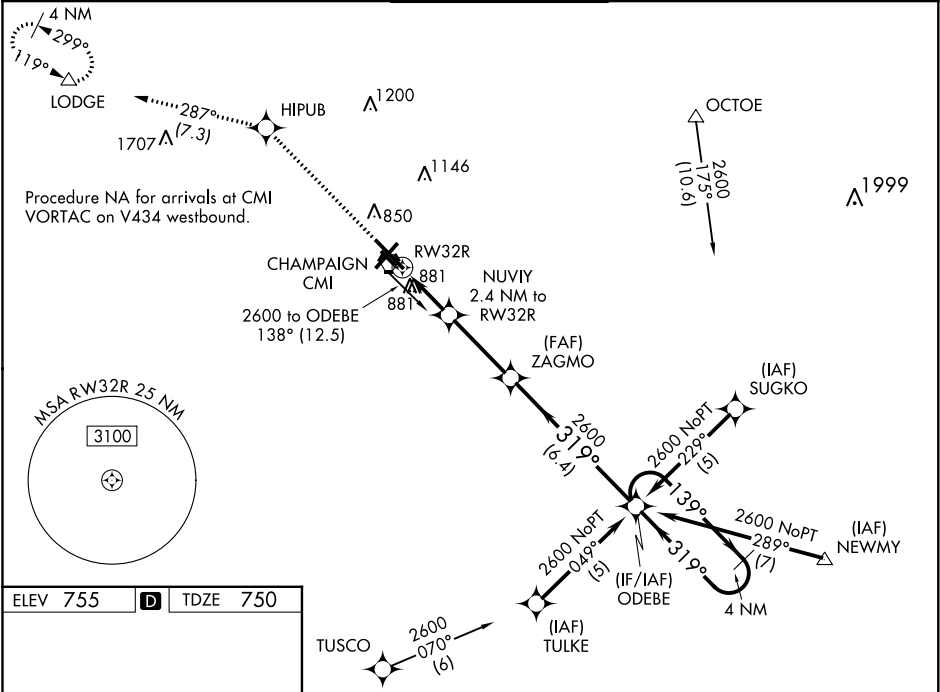
For uncompensated Baro-VNAV systems, LNAV/VNAV NA below -1° C (-2° F) or above 54° C (130° F). DME/DME RNP-0.3 NA. Baro-VNAV and VDP NA when using Rantoul altimeter setting. When local altimeter setting not received, use Rantoul altimeter setting and increase all DA 41 feet, all MDA 60 feet; increase LNAV Cat C/D visibility to RVR 5500. For inoperative MALSR, when using local or Rantoul altimeter setting, increase LNAV Cat C/D visibility to 1½ miles.

MALSR

MISSED APPROACH:

Climb to 2800 direct HIPUB and on track 287° to LODGE and hold.

| | | | | | |
|-----------------------|--|---|-------------------------|---------------------------|-------------------------|
| ATIS 124.85 | CHAMPAIGN APP CON ★ 121.35 285.65 (319°-138°) 132.85 290.225 (139°-318°) | CHAMPAIGN TOWER ★ 120.4 (CTAF) 229.4 | GND CON 121.8 | CLNC DEL 128.75 | UNICOM 122.95 |
|-----------------------|--|---|-------------------------|---------------------------|-------------------------|



| | | | | | | |
|--------------|-----------------------|-------------|---------|-------------|--------------|----------------------|
| 2800 | HIPUB | tr 287° | LODGE | ZAGMO | ODEBE | 4 NM Holding Pattern |
| * LNAV only | NUVIY 2.4 NM to RW32R | * 1560 | 319° | 139° | 2600 | GP 3.00° TCH 52 |
| 1 NM | 1.4 NM | 3.2 NM | 6.4 NM | | | |
| CATEGORY | A | B | C | D | | |
| LPV DA | 1000/24 | 250 (300-½) | | | | |
| LNAV/VNAV DA | 1159/50 | 409 (500-1) | | | | |
| LNAV MDA | 1200/24 | 450 (500-½) | 1200/45 | 450 (500-¾) | | |
| CIRCLING | 1240-1 | 485 (500-1) | 1500-2¼ | 1500-2½ | 745 (800-2¼) | 745 (800-2½) |