

LOC/DME I-CMI  
**109.1**  
Chan **28**

APP CRS  
**319°**

Rwy Idg **8102**  
TDZE **750**  
Apt Elev **755**

ILS or LOC RWY 32R

UNIVERSITY OF ILLINOIS-WILLARD (CMI)

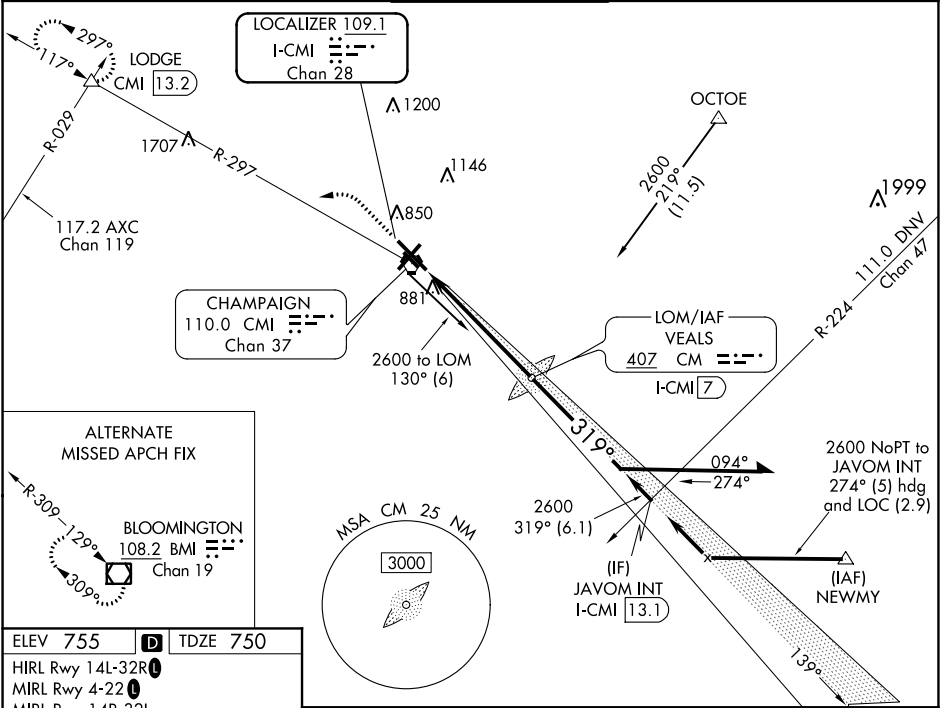
For inop ALS, increase S-LOC 32R Cat C and D visibility to RVR 6000.  
\*\*RVR 1800 authorized with use of FD or AP or HUD to DA.

MALSR

ASR

MISSED APPROACH: Climb to 1200 then climbing left turn to 2800 on CMI VORTAC R-297 to LODGE INT/CMI VORTAC 13.2 DME and hold.

ATIS <b>124.85</b>	CHAMPAIGN APP CON ★ <b>121.35 285.65</b> (319°-138°) <b>132.85 290.225</b> (139°-318°)	CHAMPAIGN TOWER ★ <b>120.4</b> (CTAF) <b>0 229.4</b>	GND CON <b>121.8</b>	CLNC DEL <b>128.75</b>	UNICOM <b>122.95</b>
-----------------------	--	---	-------------------------	---------------------------	-------------------------



ELEV **755** **D** TDZE **750**

HIRL Rwy 14L-32R **1**  
MIRL Rwy 4-22 **1**  
MIRL Rwy 14R-32L

Knots	60	90	120	150	180
Min:Sec	5:30	3:40	2:45	2:12	1:50

1200 ↑	2800 CMI R-297	LODGE △	Remain within 10 NM			
*LOC only.						
<p>Diagram details: A path starts at 1200, goes up to 2800 (CMI R-297), then down to 2572 (CM LOM I-CMI 7). From 2572, the path descends at 139° to 2600, then continues at 319° to 2600. A shaded area indicates a 3.00° TCH. Distances of 1.1 NM and 4.4 NM are marked along the path. Callouts include I-CMI 1.5, I-CMI 2.7, and CM LOM I-CMI 7.</p>						
CATEGORY	A		B		C	D
S-ILS 32R **	950/24		200 (200-½)			
S-LOC 32R	1160/24	410 (500-½)	1160/40		410 (500-¾)	
<b>C</b> CIRCLING	1240-1	485 (500-1)	1500-2¼ 745 (800-2¼)		1500-2½ 745 (800-2½)	