

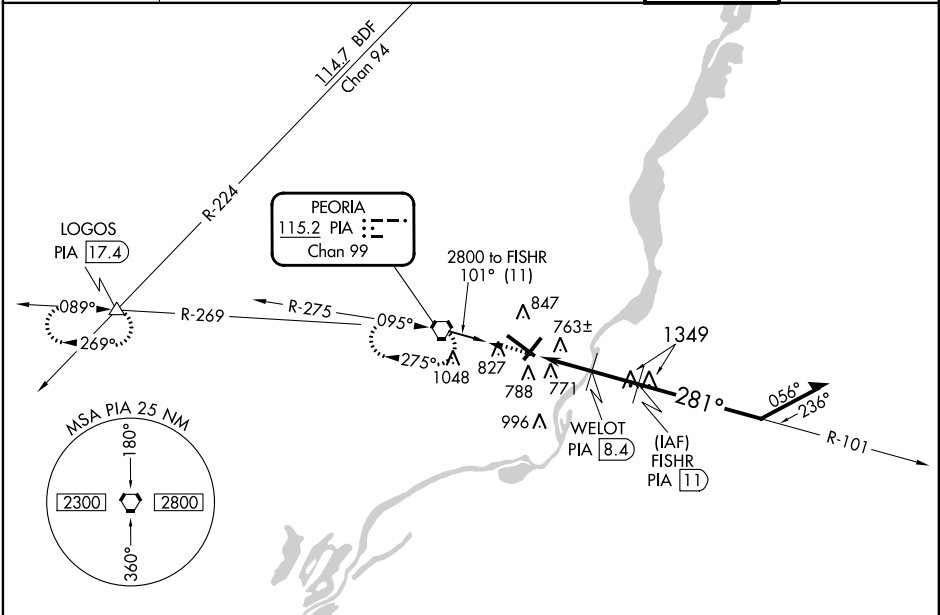
VORTAC PIA	Rwy Idg	10104
115.2	TDZE	651
Chan 99	Apt Elev	660

⚠ If local altimeter setting not available, use Logan County altimeter setting and increase all MDA's 100 feet. Inoperative table does not apply. Straight-in and Circling Rwy 31 NA at night. Circling Rwy 13 NA at night. Rwy 31 helicopter visibility reduction below RVR 5000 NA.

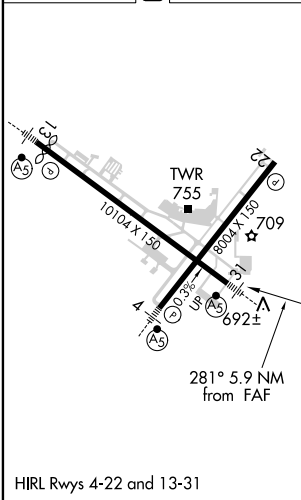


MISSED APPROACH: Climb to 2800 direct PIA VORTAC and hold, continue climb-in-hold to 2800. (TACAN aircraft continue via PIA R-269 to LOGOS Int/PIA 17.4 DME and hold west, right turn, 089° inbound).

ATIS	PEORIA APP CON	PEORIA TOWER	GND CON
126.1 282.2	125.8 269.2 (305°-125°) 124.675 317.55 (126°-304°)	124.0 353.85	121.85 348.6



ELEV 660	D	TDZE 651
----------	---	----------



2800	PIA	FISHR	PIA	11	Remain within 10 NM
WELOT	PIA	8.4	2600	281°	2800
PIA	5.1	1760	3.05°	TCH 55	
3.3 NM	2.6 NM				
CATEGORY	A	B	C	D	
S-31	1040/50	389 (400-1)		1040/60	389 (400-1½)
CIRCLING	1160-1	499 (500-1)	1180-1½	1400-2	739 (800-2)
			519 (600-1½)		