

ILS or LOC RWY 31  
GENERAL DOWNING-PEORIA INTL (PIA)

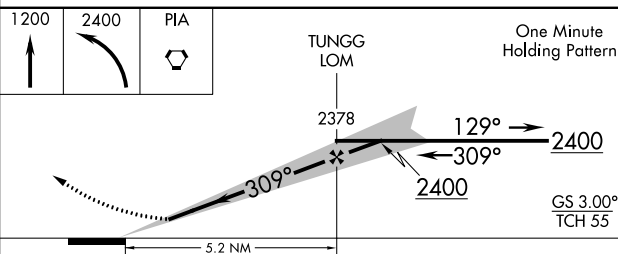
**MISSED APPROACH:** Climb to 1 200 then climbing left turn to 2400 direct PIA VORTAC and hold.


PEORIA TOWER	GND CON
<b>124.0 353.85</b>	<b>121.85 348.6</b>



□

1



CATEGORY	A	B	C	D
S-ILS 31 *	850/24 200 (200-½)			
S-LOC 31	1200/24	550 (600-½)	1200/60	550 (600-1¼)
 CIRCLING	1200-1	539 (600-1)	1200-1½ 539 (600-1½)	1400-2¼ 739 (800-2¼)

GENERAL DOWNING-PEORIA INTL (PIA)  
ILS or LOC RWY 31