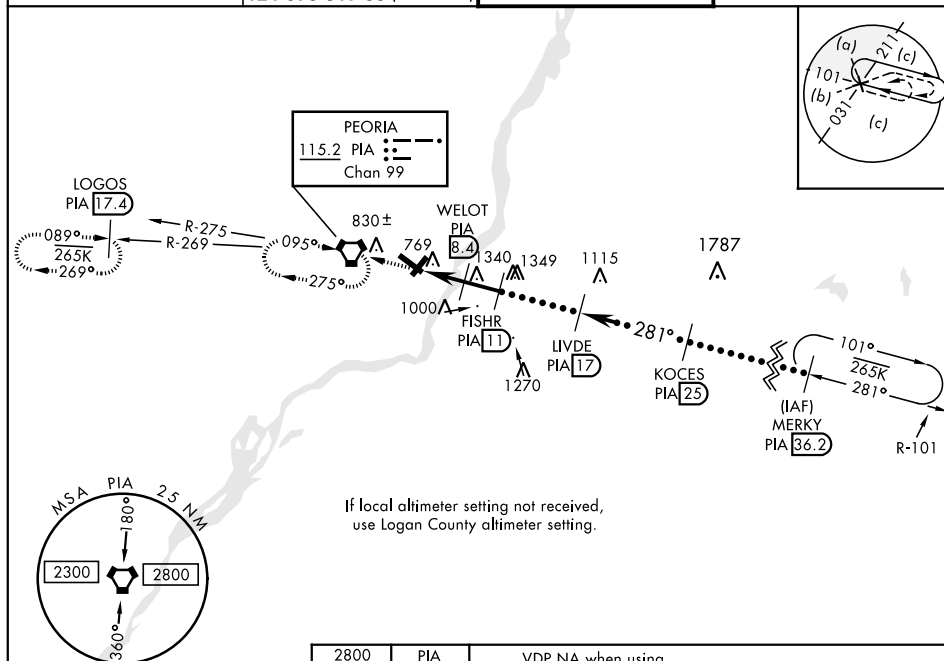
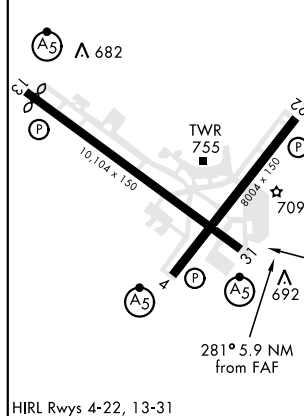




PEORIA, ILLINOIS

VORTAC PIA 115.2 Chan 99	APCH CRS 281°	Rwy Idg 10,104 TDZE 651 Arpt Elev 661	JAL 597 [USAF]	GENERAL DOWNING - PEORIA INTL (KPIA)
	MALSR 	MISSED APPROACH: Climb to 2800, direct PIA VORTAC and hold. Continue climb-in-hold to 2800. (TACAN aircraft: continue via PIA R-269 to LOGOS INT/PIA 17.4 DME and hold West, right turn 089° inbound).		
ATIS 126.1 282.2	PEORIA APP CON 125.8 269.2 (305°-125°) 124.675 317.55 (126°-304°)	PEORIA TOWER 124.0 353.85	GND CON 121.85 348.6	



EMERG SAFE ALT 100 NM 3300	
ELEV 661	TDZE 651



2800		PIA		VDP NA when using Logan County altimeter setting	
					

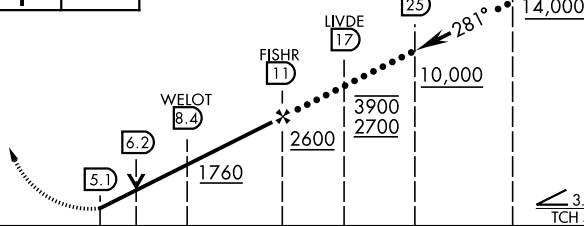


Diagram illustrating a climb profile with the following data points:

- Start Altitude: 2800
- Intermediate Altitudes: 1760, 2600, 3900, 2700, 10,000, 14,000
- Distances: 3.3 NM, 2.6 NM
- Climb Angle: 28.1°
- Scale: 3.05" = 1' (TCH 55)

CATEGORY	C	D	E
S-31	1040/50 389 (400-1)	1040/60 389	(400-1¼)
CIRCLING	1160-1½ 499 (500-1½)	1220-2 559 (600-2)	1680-3 1019 (1100-3)

LOGAN COUNTY ALTIMETER MINIMA			
S-31	1140/50 489 (500-1)	1140/60	489 (500-1¼)
CIRCLING	1260-1½ 599 (600-1½)	1320-2 659 (700-2)	1780-3 1119 (1200-3)