

WAAS CH 70309 W04A	APP CRS 043°	Rwy Idg TDZE Apt Elev	7927 592 598
--	------------------------	-----------------------------	---

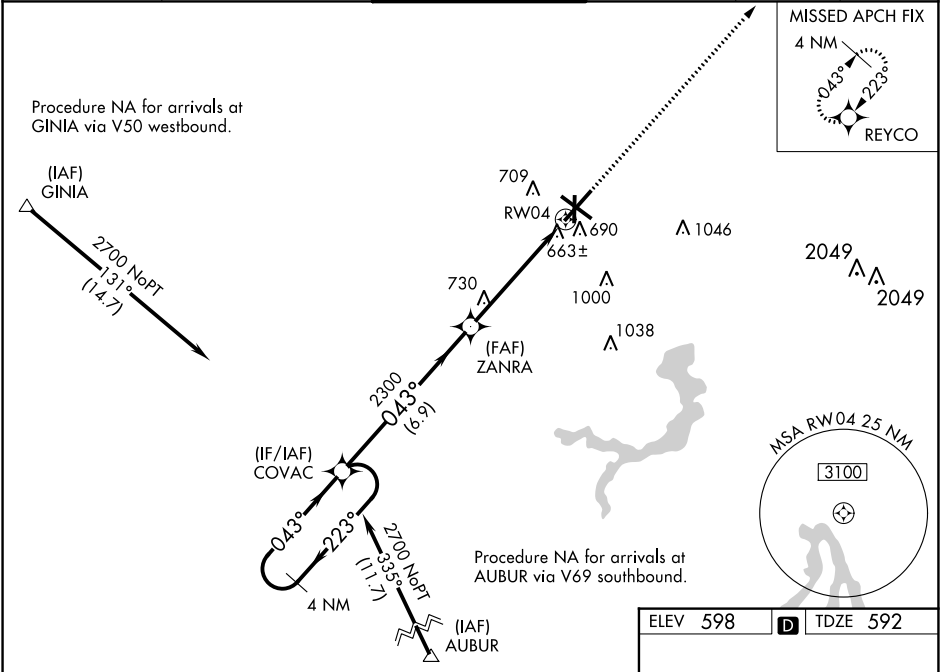
RNAV (GPS) RWY 4
ABRAHAM LINCOLN CAPITAL (SPI)

⚠ DME/DME RNP-0.3 NA. For uncompensated Baro-VNAV systems LNAV/VNAV NA below -16°C (4°F) and above 47°C (116°F). When local altimeter setting not received, use Lincoln altimeter setting: increase all DA 57 feet and MDA 60 feet, increase Circling Cat C and D visibility ¼ SM. Baro-VNAV and VDP NA when using Lincoln altimeter setting. For inoperative MALSR increase LPV all Cats visibility to RVR 5000.

MALSR

MISSED APPROACH:
Climb to 2600 direct REYCO and hold.

ATIS 127.65 270.1	SPRINGFIELD APP CON ★ 126.15 323.0	SPRINGFIELD TOWER ★ 121.3 (CTAF) 257.8	GND CON 121.9 348.6	CLNC DEL 121.7	UNICOM 122.95
-----------------------------	--	--	-------------------------------	--------------------------	-------------------------



4 NM Holding Pattern

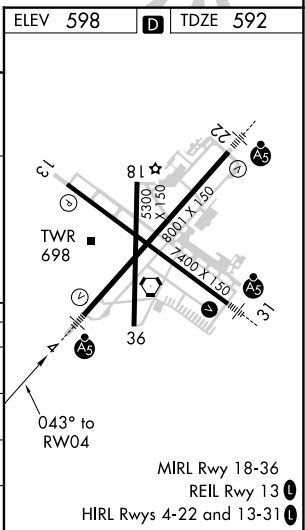
GP 3.00° TCH 56

2700 ← 223° 043° →

2300

6.9 NM 3.8 NM 1.3 NM

CATEGORY	A	B	C	D
LPV DA		854/24	262 (300-½)	
LNAV/VNAV DA		931/40	339 (400-¾)	
LNAV MDA	1060/24	468 (500-½)	1060/50	468 (500-1)
CIRCLING	1060-1 462 (500-1)	1100-1 502 (600-1)	1360-2¼ 762 (800-2¼)	1380-2½ 782 (800-2½)



EC-3, 03 DEC 2020 to 31 DEC 2020

EC-3, 03 DEC 2020 to 31 DEC 2020