

WAAS  
CH **99616**  
**W13A**

APP CRS  
**128°**

Rwy Idg **7217**  
TDZE **592**  
Apt Elev **598**

**RNAV (GPS) RWY 13**  
ABRAHAM LINCOLN CAPITAL (SPI)

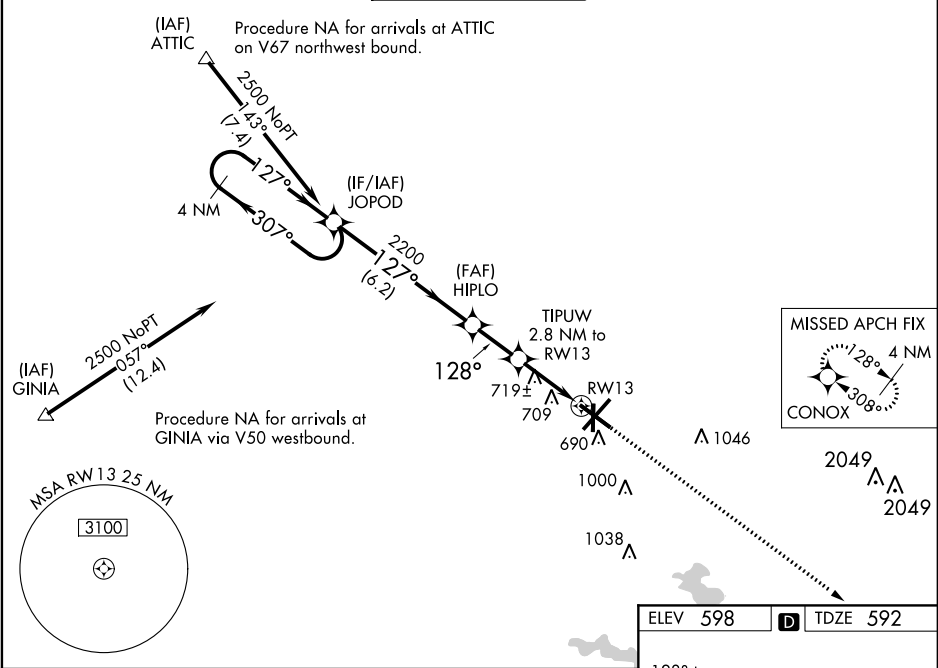
⚠

ASR

For uncompensated Baro-VNAV systems, LNAV/VNAV NA below -16°C (4°F) or above 47°C (116°F). DME/DME RNP-0.3 NA. Visibility reduction by helicopters NA. When local altimeter setting not received, use Lincoln altimeter setting: increase all DA 57 feet and MDA 60 feet, increase LPV and LNAV/VNAV all Cats visibility ¼ SM, and increase LNAV and Circling Cats C and D visibility ¼ SM. Baro-VNAV NA when using Lincoln altimeter setting. VDP NA when using Lincoln altimeter setting.

MISSED APPROACH:  
Climb to 3100 direct CONOX and hold.

ATIS <b>127.65 270.1</b>	SPRINGFIELD APP CON ★ <b>126.15 323.0</b>	SPRINGFIELD TOWER ★ <b>121.3 (CTAF) 257.8</b>	GND CON <b>121.9 348.6</b>	CLNC DEL <b>121.7</b>	UNICOM <b>122.95</b>
-----------------------------	--	--	-------------------------------	--------------------------	-------------------------



4 NM Holding Pattern JOPOD

2500 307° 127° 127° 2200 128° 2200

GP 3.00° TCH 50

6.2 NM 2 NM 1.7 NM 1.1 NM

3100 CONOX \*LNAV only.

TIPUW 2.8 NM to RWY13 \*1.1 NM to RWY13

RWY13

ELEV 598 TDZE 592

128° to RWY13

TWR 698

MIRL Rwy 18-36

REIL Rwy 13

HIRL Rwy 4-22 and 13-31

CATEGORY	A	B	C	D
LPV DA	875-1 283 (300-1)			
LNAV/VNAV DA	1011-1½ 419 (500-1½)			
LNAV MDA	980-1 388 (400-1)		980-1¼ 388 (400-1¼)	
CIRCLING	1040-1 442 (500-1)	1100-1 502 (600-1)	1360-2¼ 762 (800-2¼)	1380-2½ 782 (800-2½)