

LOC I-CJF	APP CRS	Rwy Idg	7000
110.15	308°	TDZE	590
		Apt Elev	597

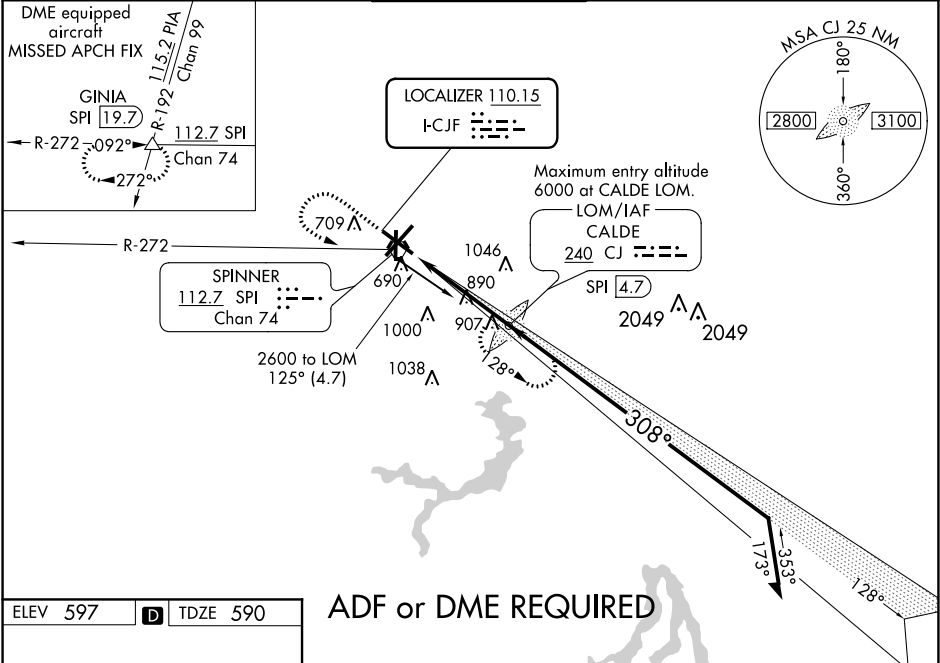
ILS or LOC RWY 31
ABRAHAM LINCOLN CAPITAL (SPI)

ADF or DME REQUIRED.
If local altimeter setting not received use Logan County altimeter setting and increase all DAs/MDAs 60 feet.
For inop MALSR, increase S-ILS-31 Cat E visibility to 3/4 and S-LOC-31 Cat E visibility to 2 1/4.
Autopilot coupled approach NA below 850.

MALSR

MISSED APPROACH: Climb to 1700 then climbing left turn to 3100 direct CALDE LOM and hold. (DME equipped aircraft climb to 1700, then climbing left turn to 3200 via SPI R-272 to GINIA INT/SPI 19.7 DME and hold.)

ATIS	SPRINGFIELD APP CON ★	SPRINGFIELD TOWER ★	GND CON	CLNC DEL	UNICOM
127.65 270.1	126.15 323.0	121.3 (CTAF) 257.8	121.9 348.6	121.7	122.95



ELEV 597	D	TDZE 590
----------	---	----------

ADF or DME REQUIRED

TWR 698

36° 308° 4.3 NM from FAF

MIRL Rwy 18-36

REIL Rwy 13

HIRL Rws 4-22 and 13-31

FAF to MAP 4.3 NM

Knots	60	90	120	150	180
Min:Sec	4:18	2:52	2:09	1:43	1:26

1700 3100 CJ

CJ LOM SPI 4.7

6000

2014

128°

308°

2600

2100

GS 3.00° TCH 55

4.3 NM

Remain within 15 NM

CATEGORY	A	B	C	D	E
S-ILS 31	790-1/2 200 (200-1/2)				
S-LOC 31	1200-1/2 610 (700-1/2)	1200-1/4 610 (700-1/2)	1200-1/2 610 (700-1/2)	1200-1/4 610 (700-1/2)	1200-1/4 610 (700-1/2)
CIRCLING	1200-1 603 (700-1)	1200-1/4 603 (700-1/4)	1200-2 603 (700-2)	1380-2 783 (800-2 3/4)	1380-2 783 (800-2 3/4)

EC-3, 03 DEC 2020 to 31 DEC 2020

EC-3, 03 DEC 2020 to 31 DEC 2020