

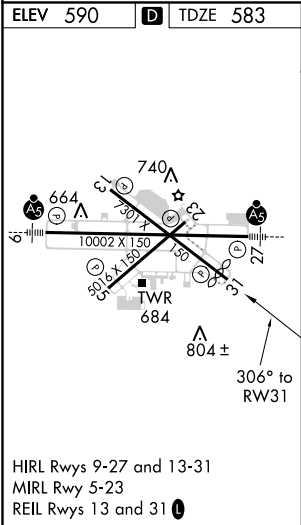
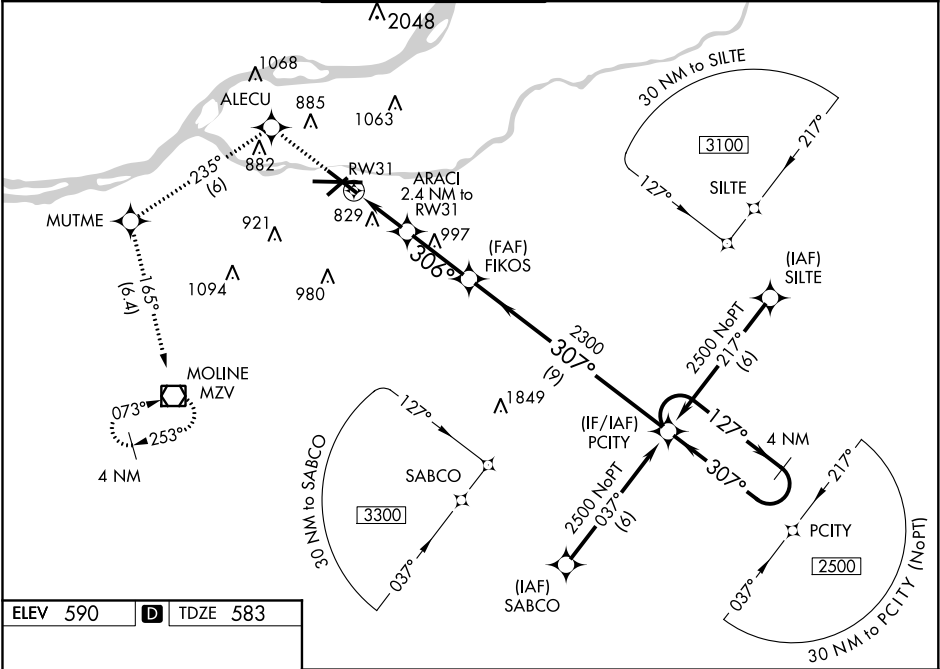
WAAS CH <b>86715</b> <b>W31A</b>	APP CRS <b>306°</b>	Rwy Idg TDZE <b>583</b> Apt Elev <b>590</b>
--	------------------------	---

RNAV (GPS) RWY 31

QUAD CITY INTL (MLI)

<div> <div>             ⚠         </div> <div>             Circling to Rwy 5 NA at night. For uncompensated Baro-VNAV systems, LNAV/VNAV NA below -16°C (4°F) or above 47°C (116°F). DME/DME RNP-0.3 NA. When local altimeter setting not received, use Davenport altimeter setting and increase LPV DA to 1078 feet and LNAV/VNAV DA to 1207 feet and all MDA 60 feet, increase LPV all Cats, LNAV/VNAV all cats, LNAV Cats C and D, and Circling Cats C and D visibility ¼ SM. Baro-VNAV and VDP NA when using Davenport altimeter setting. Rwy 31 helicopter visibility reduction below ¾ SM NA.         </div> </div>	<div>             MISSED APPROACH: Climb to 3000 direct ALECU and on track 235° to MUTME and on track 165° to MZV VOR/DME and hold.         </div>
---	--

ATIS <b>121.2</b>	QUAD CITY APP CON ★ <b>125.95 257.8</b>	QUAD CITY TOWER ★ <b>119.4 (CTAF) 0 269.55</b>	GND CON <b>121.9</b>	CLNC DEL <b>124.05</b>	UNICOM <b>122.95</b>
----------------------	--	---	-------------------------	---------------------------	-------------------------



3000 ↑ ALECU		tr 235° ✧		MUTME		tr 165° ✧		MZV ◻		PCITY 4 NM Holding Pattern	
*LNAV only		ARACI 2.4 NM to RW31		FIKOS		307°		127° → 2500		← 307°	
RW31 *1.4 NM to RW31		306°		*1380		2300		GP 3.00° TCH 48			
1.4		1 NM		2.8 NM		9 NM					
CATEGORY		A		B		C		D			
LPV DA		1031-1½		448 (500-1½)							
LNAV/VNAV DA		1160-2		577 (600-2)							
LNAV MDA		1080-1 497 (500-1)		1080-1¼ 497 (500-1¼)		1080-1½ 497 (500-1½)					
CIRCLING		1140-1 550 (600-1)		1140-1½ 550 (600-1½)		1260-2 670 (700-2)					