

APP CRS

Rwy Idg

8012

076°

TDZE

729

Apt Elev

729

RNAV (RNP) Y RWY 7R

GENERAL MITCHELL INTL (MKE)

RF required. RNP AR APCH.

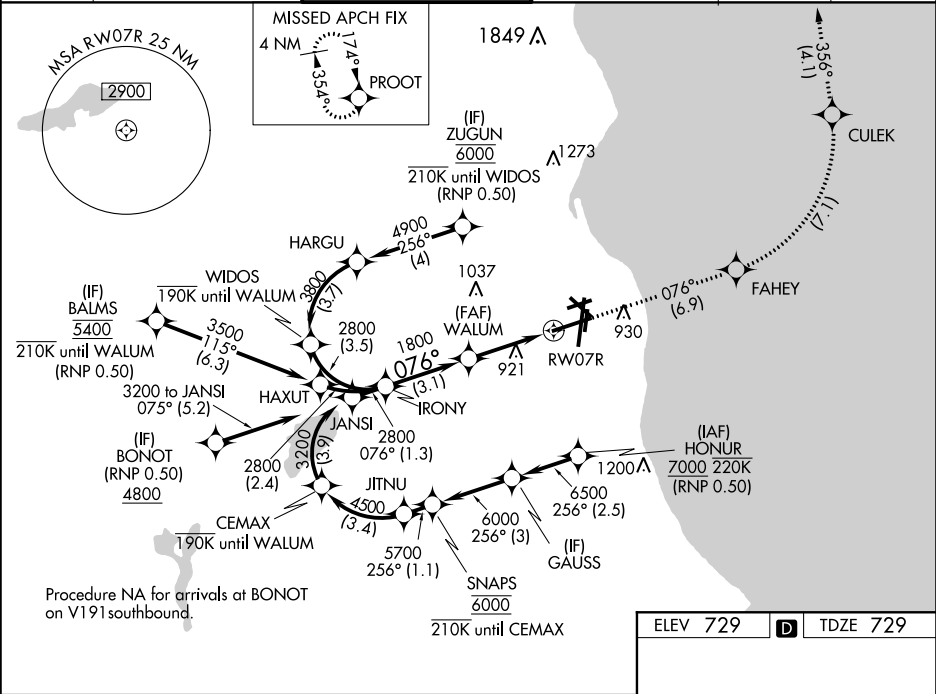
▼

For uncompensated Baro-VNAV systems, procedure NA below -20°C or above 54°C. For inop ALS, increase RNP 0.10 all Cats visibility to 1¼. For inop ALS, increase RNP 0.15 all Cats visibility to 1½. For inop ALS, increase RNP 0.30 all Cats visibility 1¾.

MALSR

MISSED APPROACH: Climb to 3700 on the RNAV missed approach route to PROOT and hold.

D-ATIS	MILWAUKEE APP CON	MILWAUKEE TOWER	GND CON	CLNC DEL	CPDLC
126.4	126.5 307.0	124.575 269.05	121.8 263.125	120.8	



See planview for multiple IF locations.

IRONY

2800

076°

1800

WALUM

1800

3700

FAHEY

tr 076°

CULEK

tr 356°

PROOT

GP 3.00°

TCH 50

3.1 NM

3.2 NM

RW07R

CATEGORY	A	B	C	D
RNP 0.10 DA		1119/45	390 (400-¾)	
RNP 0.15 DA		1203/60	474 (500-1¼)	
RNP 0.30 DA		1255-1⅜	526 (600-1½)	

AUTHORIZATION REQUIRED

ELEV 729

TDZE 729

TDZ/CL Rwy 1L
REIL Rwy 1R, 7L,
13, 25L, 25R, and 31
HIRL Rwy 1L-19R and 7R-25L
MIRL Rwy 1R-19L, 13-31 and 7L-25R