

APP CRS
256°

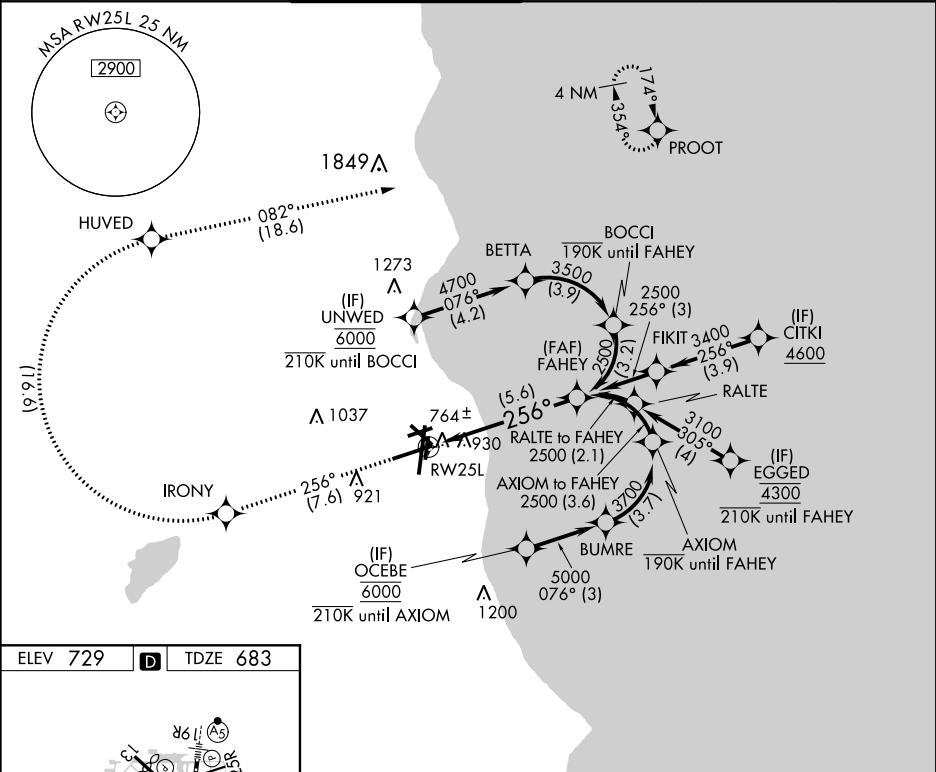
Rwy Idg
TDZE
Apt Elev

7867
683
729

RNAV (RNP) Y RWY 25L

GENERAL MITCHELL INTL (MKE)

RF required. RNP AR APCH.				MISSED APPROACH: Climb to 3700 on the RNAV missed approach route to PROOT and hold.	
▼ For uncompensated Baro-VNAV systems, procedure NA below -20°C or above 54°C.					
D-ATIS 126.4	MILWAUKEE APP CON 126.5 307.0	MILWAUKEE TOWER 124.575 269.05	GND CON 121.8 263.125	CLNC DEL 120.8	CPDLC



ELEV 729

D

TDZE 683

4797 X 100
TWR
887

8300 X 150
UP

4182 X 150
DOWN

256° to RW25L

3700

IRONY

HUVED

PROOT

See planview for multiple IF locations.

RW25L

256°

FAHEY
2500

2500

GP 3.00°
TCH 47

5.6 NM

CATEGORY	A	B	C	D
RNP 0.10 DA		1087-1 $\frac{3}{8}$	404 (400-1 $\frac{3}{8}$)	
RNP 0.30 DA		1256-2	573 (600-2)	

AUTHORIZATION REQUIRED

EC-3, 03 DEC 2020 to 31 DEC 2020

EC-3, 03 DEC 2020 to 31 DEC 2020