

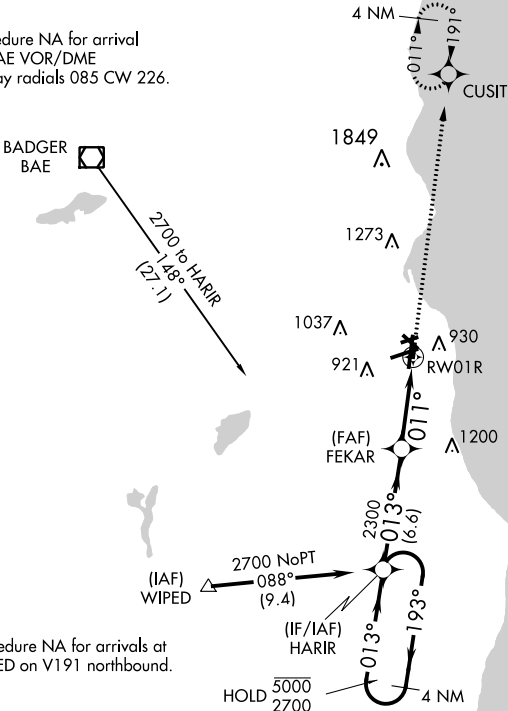
WAAS CH <b>97442</b> <b>W01B</b>	APP CRS <b>011°</b>	Rwy Idg TDZE Apt Elev	<b>4182</b> <b>678</b> <b>729</b>
--	------------------------	-----------------------------	---

RNAV (GPS) RWY 1R

GENERAL MITCHELL INTL (MKE)

RNP APCH.		MISSED APPROACH: Climb to 2900 direct CUSIT and hold.		
For uncompensated Baro-VNAV systems, LNAV/VNAV NA below -20°C or above 54°C.				
D-ATIS <b>126.4</b>	MILWAUKEE APP CON <b>126.5 307.0</b>	MILWAUKEE TOWER <b>124.575 269.05</b>	GND CON <b>121.8 263.125</b>	CLNC DEL <b>120.8</b>
		CPDLC		

Procedure NA for arrival  
on BAE VOR/DME  
airway radials 085 CW 226.



Procedure NA for arrivals at  
WIPEO on V191 northbound.

4 NM

Holding Pattern

5000

2700

193°

013°

HARIR

FEKAR

2300

013°

011°

2300

6.6 NM

3.7 NM

1.3 NM

\*1.3 NM to RW01R

RW01R

2900

CUSIT

\*LNAV only

GP 3.00°

TCH 45

CATEGORY	A	B	C	D
LPV DA	928-1		250 (200-1)	
LNAV/VNAV DA	1078-1½		400 (400-1½)	
LNAV MDA	1140-1	462 (500-1)	1140-1¾	462 (500-1¾)
CIRCLING	1240-1	511 (600-1)	1240-1½ 511 (600-1½)	1360-2 631 (700-2)

