

WAAS CH 86821 W14A	APP CRS 139°	Rwy Idg TDZE 861 Apt Elev 887	5369
--	------------------------	---	-------------

RNAV (GPS) RWY 14

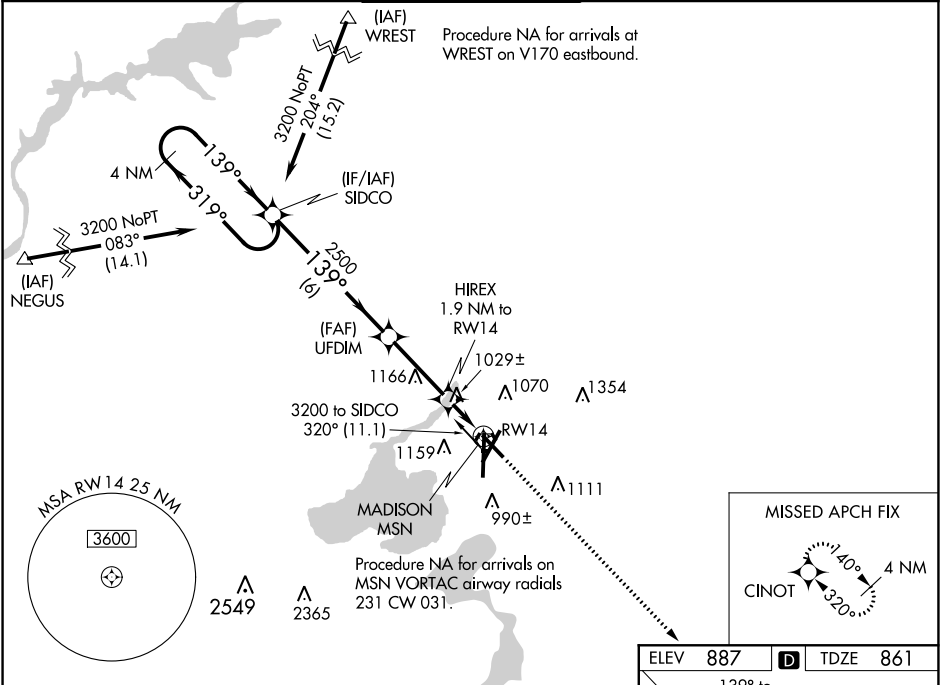
DANE COUNTY RGNL-TRUAX FIELD (MSN)



For uncompensated Baro-VNAV systems, LNAV/VNAV NA below -19°C (-2°F) or above 54°C (130°F). Helicopter visibility reduction below ¾ SM NA. DME/DME RNP-0.3 NA.

MISSED APPROACH: Climb to 3000 direct CINOT and hold.

ATIS 124.65 278.3	MADISON APP CON ★ 135.45 343.7	MADISON TOWER ★ 119.3 (CTAF) 0 257.8	GND CON 121.9 348.6	CLNC DEL 121.625	UNICOM 122.95
-----------------------------	--	---	-------------------------------	----------------------------	-------------------------



4 NM Holding Pattern

VGSI and RNAV glidepath not coincident (VGSI Angle 3.00/TCH 45).

3000 CINOT

GP 3.00° TCH 55

*LNAV only

6 NM 3.1 NM 0.7 NM 1.2 NM

CATEGORY	A	B	C	D
LPV DA	1111-¾ 250 (300-¾)			
LNAV/VNAV DA	1246-1¼ 385 (400-1¼)			
LNAV MDA	1280-1	419 (400-1)	1280-1¼	419 (400-1¼)
CIRCLING	1420-1 533 (600-1)	1460-1 573 (600-1)	1460-1½ 573 (600-1½)	1700-2¾ 813 (900-2¾)

ELEV 887 TDZE 861

139° to RWY 14

949±

TWR 964

36

HIRL all Rwy 1

REIL Rwy 14

REIL Rwy 3 and 32