
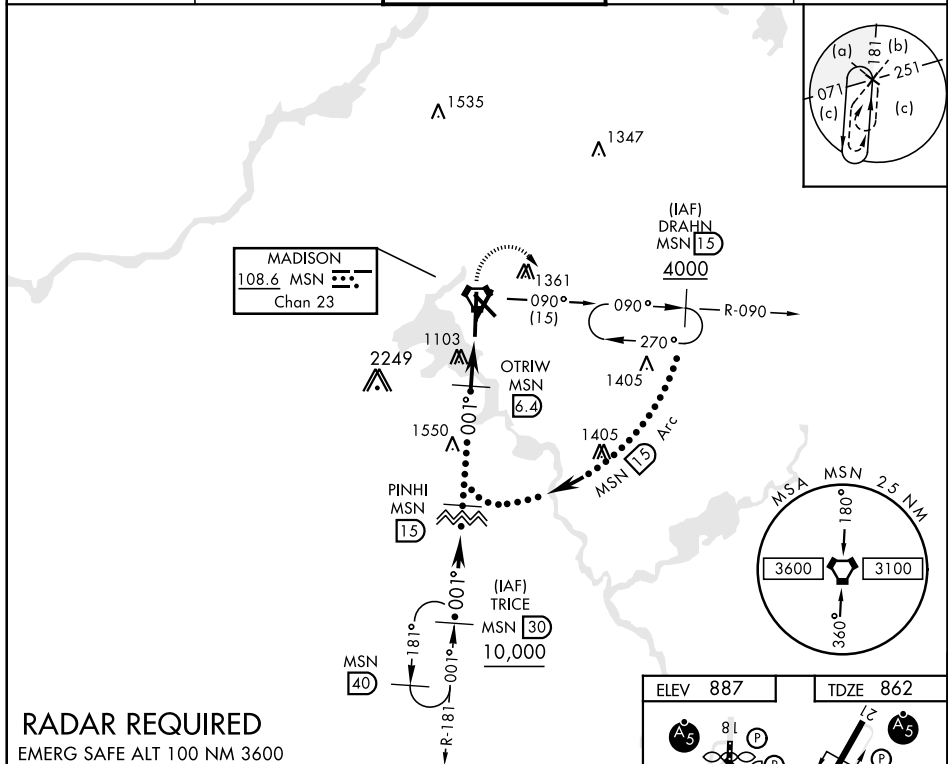


VORTAC MSN 108.6 Chan 23	APCH CRS 001°	Rwy ldg TDZE 862 Arprt Elev 887	JAL-245 [USAF] MADISON/ DANE COUNTY REGIONAL-TRUAX FIELD (KMSN)
--	-------------------------	---	--

MALSR 		MISSED APPROACH: Climbing right turn to 4000 on MSN VORTAC R-090 to DRAHN 15 DME and hold.		
ATIS 124.65 278.3	MADISON APP CON EAST 120.1 350.3 WEST 135.45 343.7	MADISON TOWER ★ 119.3 (CTAF) 257.8	GND CON 121.9 348.6	ASR



RADAR REQUIRED

EMERG SAFE ALT 100 NM 3600

CATEGORY	C	D	E
S-36	1320/40 458 (500-¾)	1320/50 458 (500-1)	
C CIRCLING	1460-1½ 573 (600-1½)	1700-2¾ 813 (900-2¾)	1700-3 813 (900-3)

951 ± A
 924 ± A
 916
 7200 A 150
 5844 x 150
 0.45 UP
 Rwy 3 ldg 6770'
 Rwy 14 ldg 5369'
 Rwy 18 ldg 8606'
 Rwy 36 ldg 8017'
 0006 x 150
 36
 001° 5.3 NM from FAF
 HIRL all Rwy
 REIL Rwy 3, 14 and 32

MADISON, WISCONSIN

43°08'N-89°20'W

DANE COUNTY REGIONAL-TRUAX FIELD (KMSN)

Amdt 1A 28FEB19