

WAAS
CH **53528**
W18A

APP CRS
180°

Rwy Idg **5199**
TDZE **430**
Apt Elev **430**

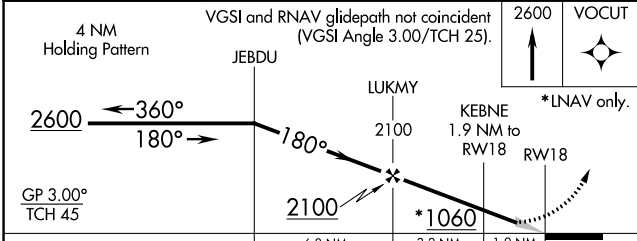
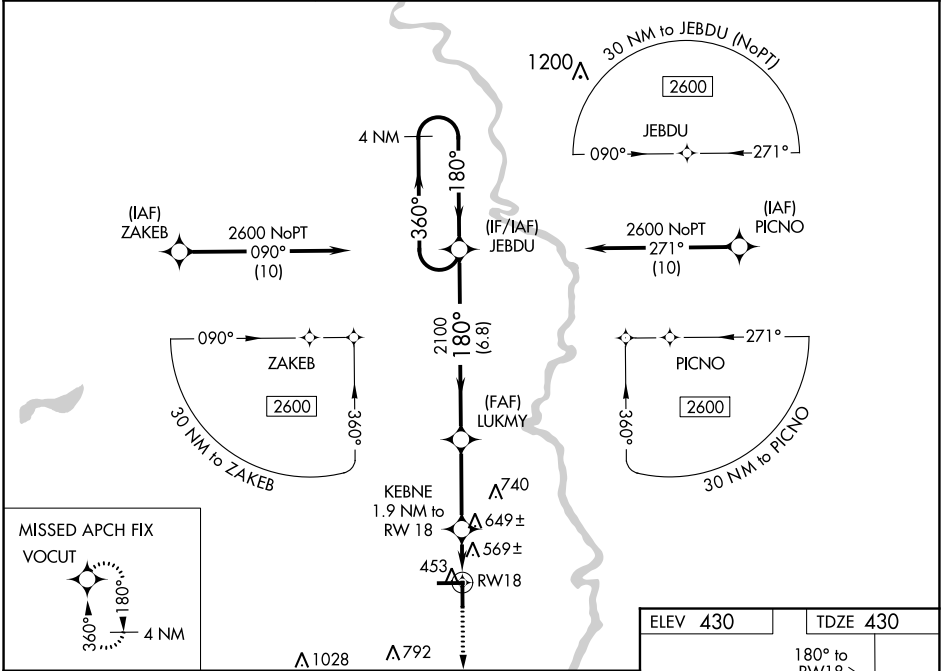
RNAV (GPS) RWY 18

LAWRENCEVILLE-VINCENNES INTL (L WV)

⚠ For uncompensated Baro-VNAV systems, LNAV/VNAV NA below -15°C (5°F) or above 41°C (105°F).
⚠ DME/DME RNP-0.3 NA. Baro-VNAV and VDP NA when using Mount Carmel altimeter setting. When local altimeter setting not received, use Mount Carmel altimeter setting; increase all DA 26 feet, and all MDA 40 feet; increase LNAV/VNAV visibility all Cats ½ mile, LNAV visibility Cats C and D ¼ mile, and Circling visibility Cat C ½ mile. Circling to Rwy 36 NA at night.

MISSED APPROACH:
Climb to 2600 direct
VOCUT and hold.

| | | |
|----------------------|--|---------------------------------|
| ASOS 118.0 | EVANSVILLE APP CON ★ 125.6 343.7 | UNICOM 122.8 (CTAF) ① |
|----------------------|--|---------------------------------|



| CATEGORY | A | B | C | D |
|--------------|-------|-------------|------------------------|----------------------|
| LPV DA | | 630-¾ | 200 (200-¾) | |
| LNAV/VNAV DA | | 876-1½ | 446 (500-1½) | |
| LNAV MDA | 940-1 | 510 (600-1) | 940-1¾ | 510 (600-1¾) |
| CIRCLING | 940-1 | 510 (600-1) | 940-1½ 510 (600-1½) | 980-2 550 (600-2) |

