

WAAS CH 56509 W13A	APP CRS 135°	Rwy Idg 5310 TDZE 656 Apt Elev 656
--	------------------------	---

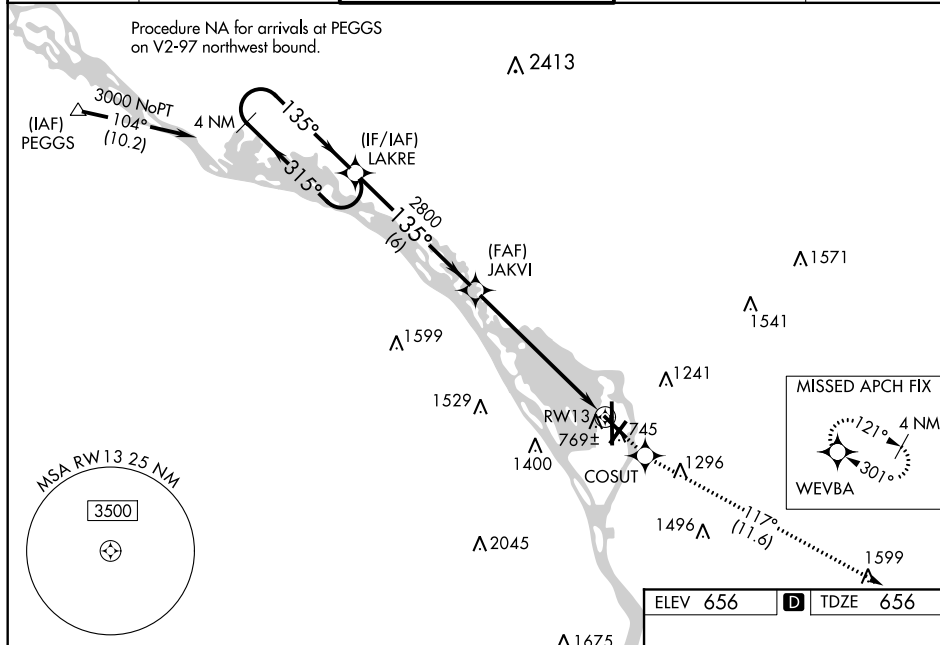
RNAV (GPS) RWY 13
LA CROSSE RGNL (LSE)

Baro-VNAV NA when using Winona alimeter setting. For uncompensated Baro-VNAV systems, LNAV/VNAV NA below -27° C (-16° F) or above 54° C (130° F). DME/DME RNP-0.3 NA. Helicopter visibility reduction below $\frac{3}{4}$ SM NA. Circling to Rwy 22 NA at night.

-20°C When local alimeter setting not received, use Winona alimeter setting and increase DA 53 feet, increase LPV and LNAV/VNAV visibility $\frac{1}{4}$ mile all Cats, increase all MDA 60 feet, increase LNAV Cats C/D and Circling Cat B visibility $\frac{1}{4}$ mile.

MISSED APPROACH:
Climb to 3000 direct
COSUT and on track
117° to WEVBA
and hold.

ATIS 124.95	MINNEAPOLIS CENTER 128.6 363.0	LA CROSSE TOWER ★ 118.45 (CTAF) 0 251.075	GND CON 121.8	UNICOM 122.95
-----------------------	--	---	-------------------------	-------------------------



4 NM Holding Pattern

LAKRE

3000 ← 315°
135° →

GP 3.00°
TCH 45

135°

2800

6 NM

6.5 NM

JAKVI 2800

VGS1 and RNAV glidepath not coincident (VGS1 Angle 3.00/TCH 33).

RW13

CATEGORY	A	B	C	D
LPV DA	958-1 302 (400-1)			
RNAV/ VNAV DA	1020-1¼ 364 (400-1¼)			
RNAV MDA	1140-1 484 (500-1)		1140-1⅜ 484 (500-1⅜)	1140-1½ 484 (500-1½)
C CIRCLING	1140-1 484 (500-1)	1460-1 804 (900-1)	1760-3 1104 (1200-3)	1820-3 1164 (1200-3)

