


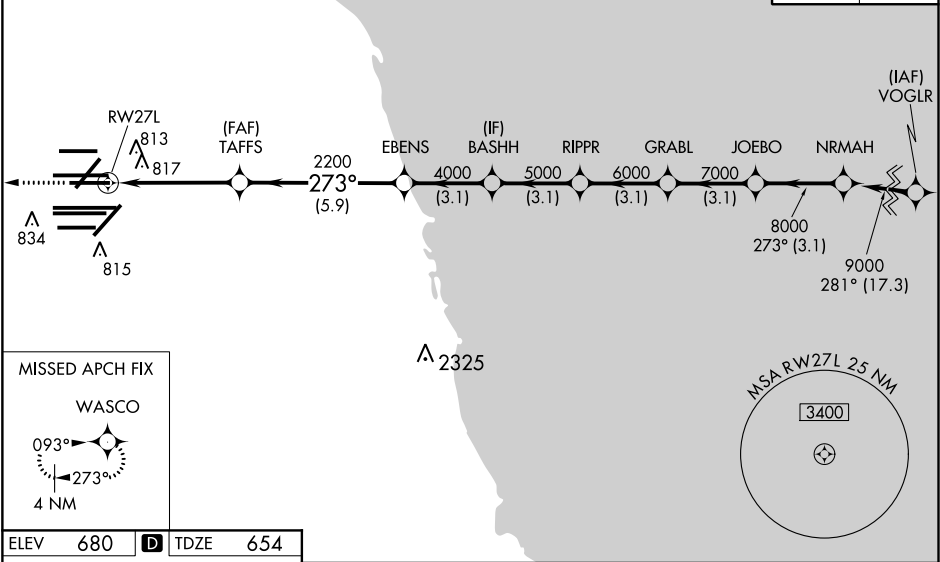
WAAS CH <b>77804</b> <b>W27A</b>	APP CRS <b>273°</b>	Rwy Idg TDZE Apt Elev	<b>7782</b> <b>654</b> <b>680</b>
--	------------------------	-----------------------------	---

RNAV (GPS) Z RWY 27L  
CHICAGO O'HARE INTL (ORD)

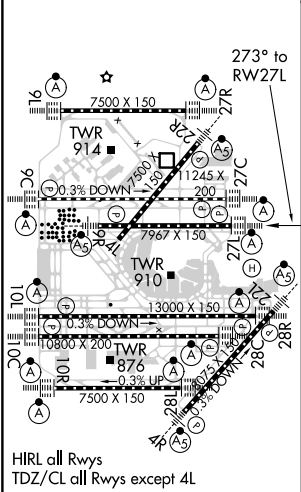
▼ For uncompensated Baro-VNAV systems, LNAV/VNAV NA below -19°C (-2°F) or above 54°C (130°F). Simultaneous approach authorized. DME/DME RNP-0.3 NA. LNAV procedure NA during simultaneous operations. Use of FD or AP providing RNAV track guidance required during simultaneous operations. For inop ALSF-2, increase LNAV Cat C/D visibility to 1½ mile.					ALSF-2 	MISSED APPROACH Climb to 4000 direct WASCO and hold.
D-ATIS <b>135.4</b> <b>282.225</b>	CHICAGO APP CON <b>119.0 292.125</b>	O'HARE TOWERS <b>128.15 348.0</b> (Rwy 9L/27R) <b>133.0 348.0</b> (110R/28L) <b>120.75 121.15 126.9 132.7 348.0</b> (CENTER)			GND CON (TWR NORTH) <b>124.125</b> (TWR SOUTH) <b>118.05</b> (ALL TWRs) <b>226.675</b>	(TWR CENTER) <b>121.75</b> (IBND) <b>121.9</b> (IBND)



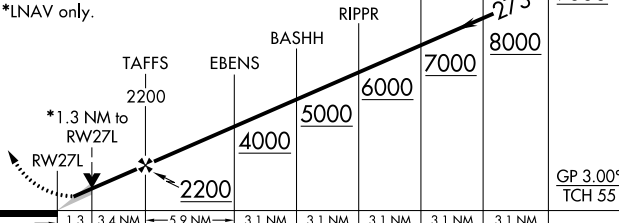
RADAR REQUIRED

CLNC DEL <b>121.6</b>	CPDLC
--------------------------	-------



ELEV 680	D	TDZE 654
----------	---	----------



4000	WASCO	VGSI and RNAV glidepath not coincident (VGSI Angle 3.00/TCH 67).				
						
*LNAV only.						
						
CATEGORY	A		B		C	D
LPV	DA	854/18		200 (200-½)		
LNAV/ VNAV	DA	1125/60		471 (500-1¼)		
LNAV	MDA	1120/24	466 (500-½)	1120/50		466 (500-1)