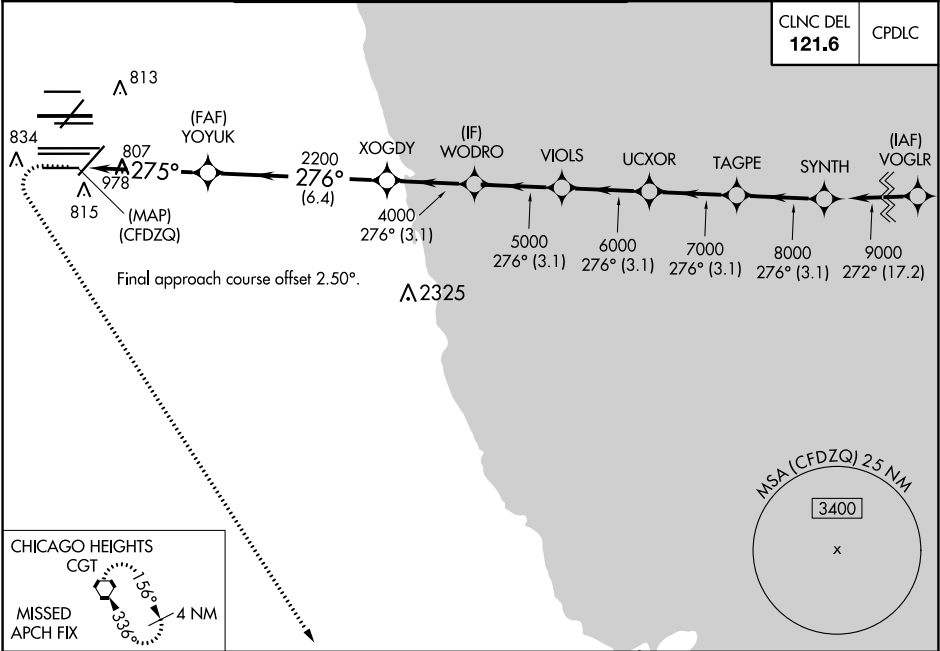


WAAS CH 93839 W28E	APP CRS 275°	Rwy Idg TDZE 667 Apt Elev 680
--	------------------------	---

RNAV (GPS) Y RWY 28L

CHICAGO O'HARE INTL (ORD)

RNP APCH		ALSIF-2		MISSED APPROACH: Climb to 1200 then climbing left turn to 4000 direct CGT VORTAC and hold.	
Simultaneous approach authorized. LNAV procedure NA during simultaneous operations. For uncompensated Baro-VNAV systems, LNAV/VNAV NA below -19°C or above 54°C. Use of FD or AP required during simultaneous operations.					
D-ATIS 135.4 282.225	CHICAGO APP CON 119.0 292.125	O'HARE TOWERS 128.15 348.0 (Rwy 9L/27R) 133.0 348.0 (10R/28L) 120.75 121.15 126.9 132.7 348.0 (CENTER)		GND CON (TWR NORTH) 124.125 (TWR SOUTH) 118.05 (ALL TWRs) 226.675	(TWR CENTER) (OBND) 121.75 (IBND) 121.9



1200		4000		CGT		SYNTH		ELEV 680		D		TDZE 667	
* LNAV only													
						TAGPE		9000					
						UCXOR		7000					
						VIOLS		6000					
						WODRO		5000					
						XOGDY		4000					
						YOYUK		2200					
						* 1.1 NM to (CFDZQ)		2200					
						(CFDZQ)		275°					
						1.1		3.6 NM					
						6.4 NM		3.1 NM					
						3.1 NM		3.1 NM					
						3.1 NM		3.1 NM					
						3.1 NM		3.1 NM					
						3.1 NM		3.1 NM					
						3.1 NM		3.1 NM					
						3.1 NM		3.1 NM					
						3.1 NM		3.1 NM					
						3.1 NM		3.1 NM					
						3.1 NM		3.1 NM					
						3.1 NM		3.1 NM					
						3.1 NM		3.1 NM					
						3.1 NM		3.1 NM					
						3.1 NM		3.1 NM					
						3.1 NM		3.1 NM					
						3.1 NM		3.1 NM					
						3.1 NM		3.1 NM					
						3.1 NM		3.1 NM					
						3.1 NM		3.1 NM					
						3.1 NM		3.1 NM					
						3.1 NM		3.1 NM					
						3.1 NM		3.1 NM					
						3.1 NM		3.1 NM					
						3.1 NM		3.1 NM					
						3.1 NM		3.1 NM					
						3.1 NM		3.1 NM					
						3.1 NM		3.1 NM					
						3.1 NM		3.1 NM					
						3.1 NM		3.1 NM					
						3.1 NM		3.1 NM					
						3.1 NM		3.1 NM					
						3.1 NM		3.1 NM					
						3.1 NM		3.1 NM					
						3.1 NM		3.1 NM					
						3.1 NM		3.1 NM					
						3.1 NM		3.1 NM					
						3.1 NM		3.1 NM					
						3.1 NM		3.1 NM					
						3.1 NM		3.1 NM					
						3.1 NM		3.1 NM					
						3.1 NM		3.1 NM					
						3.1 NM		3.1 NM					
						3.1 NM		3.1 NM					
						3.1 NM		3.1 NM					
						3.1 NM		3.1 NM					
						3.1 NM		3.1 NM					
						3.1 NM		3.1 NM					
						3.1 NM		3.1 NM					
						3.1 NM		3.1 NM					
						3.1 NM		3.1 NM					
						3.1 NM		3.1 NM					
						3.1 NM		3.1 NM					
						3.1 NM		3.1 NM					
						3.1 NM		3.1 NM					
						3.1 NM		3.1 NM					
						3.1 NM		3.1 NM					
						3.1 NM		3.1 NM					
						3.1 NM		3.1 NM					
						3.1 NM		3.1 NM					
						3.1 NM		3.1 NM					
						3.1 NM		3.1 NM					
						3.1 NM		3.1 NM					