

RNAV (GPS) PRM Y RWY 10R

(CLOSE PARALLEL)

CHICAGO O'HARE INTL (ORD)

WAAS CH 77937 W10D	APP CRS 090°	Rwy Idg 7500 TDZE 680 Apt Elev 680
--	------------------------	---

▼ DME/DME RNP-0.3 NA. Simultaneous approach authorized. Dual VHF comm required. See additional requirements on AAPP. For uncompensated Baro-VNAV systems, LNAV/VNAV NA below -19°C (-2°F) or above 54°C (130°F). Use of FD or AP providing RNAV track guidance required during simultaneous operations. Inop table does not apply to LPV all Cats. Rwy 10R helicopter visibility reduction below $\frac{3}{4}$ SM NA.

ALSF-2

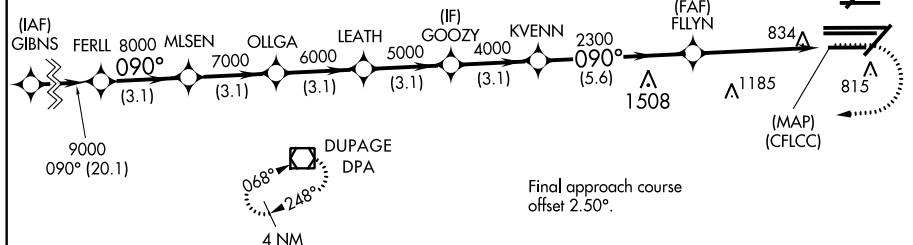
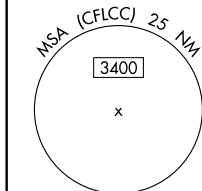


MISSED APPROACH: Climb to 1200 then climbing right turn to 4000 direct DPA VOR/DME and hold.

D-ATIS	CHICAGO APP CON	O'HARE TOWERS	GND CON	(TWR CENTER)
135.4		128.15 348.0(Rwy 9L/27R)	124.125 (TWR NORTH)	121.75 (IBND)
282.225	119.0 292.125	120.75 121.15 126.9	118.05 (TWR SOUTH)	121.9 (IBND)
		133.0 348.0(10R/28L)	226.675 (ALL TWRS)	
		132.7 348.0(CENTER)		

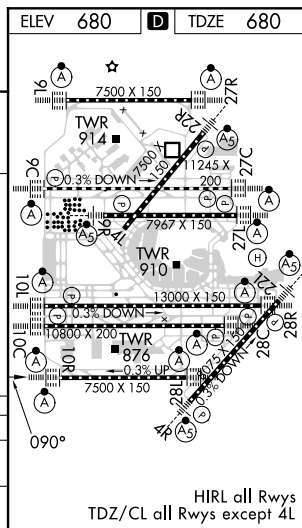
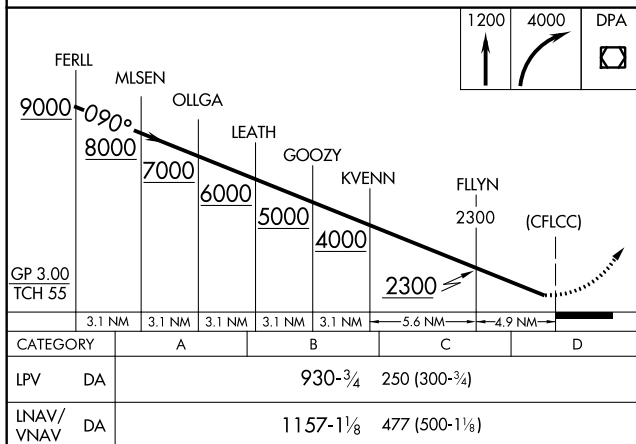
PRM 128.05

CLNC DEL 121.6	CPDLC
--------------------------	-------



Final approach course
offset 2.50°.

RADAR REQUIRED



CHICAGO, ILLINOIS
Orig-A 22JUN17

41°59'N-87°54'W

CHICAGO O'HARE INTL (ORD)

RNAV (GPS) PRM Y RWY 10R (CLOSE PARALLEL)