

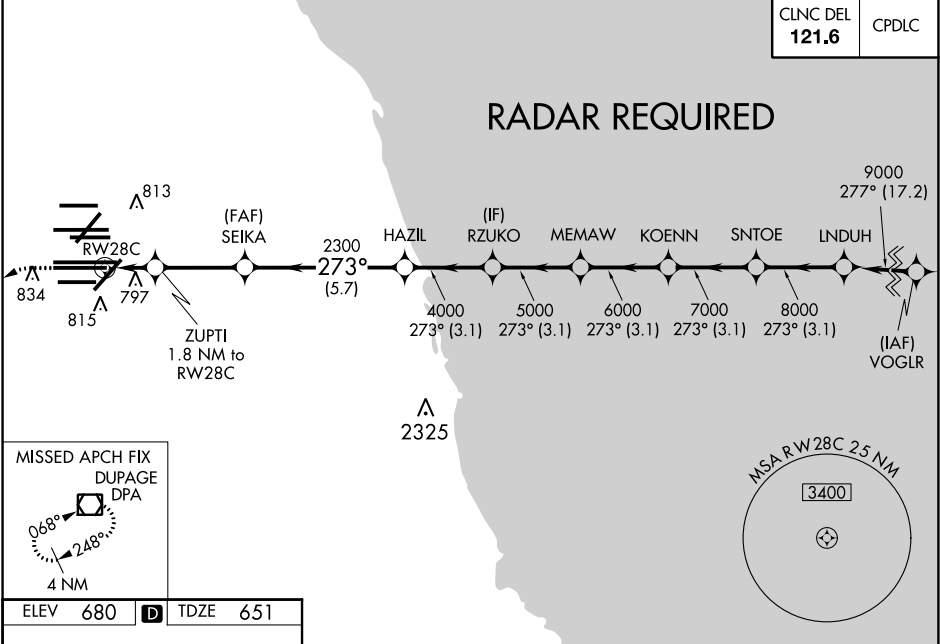
WAAS CH 42634 W28B	APP CRS 273°	Rwy Idg 10800 TDZE 651 Apt Elev 680
--	------------------------	--

RNAV (GPS) RWY 28C

CHICAGO O'HARE INTL (ORD)

▼ DME/DME RNP-0.3 NA. Simultaneous approach authorized. For uncompensated Baro-VNAV systems, LNAV/VNAV NA below -19°C (-2°F) or above 54°C (130°F). LNAV procedure NA during simultaneous operations. Use of FD or AP providing RNAV track guidance required during simultaneous operations. For inop ALSF, increase LNAV Cat C and D visibility to RVR 6000.				ALSF-2 	MISSED APPROACH: Climb to 1100 then climbing left turn to 4000 direct DPA VOR/DME and hold.
D-ATIS 135.4 282.225	CHICAGO APP CON 119.0 292.125	O'HARE TOWERS 128.15 348.0 (Rwy 9L/27R) 133.0 348.0 (10R/28L) 120.75 121.15 126.9 132.7 348.0 (CENTER)			GND CON (TWR CENTER) (TWR SOUTH) (ALL TWRs) 124.125 118.05 226.675

CLNC DEL 121.6	CPDLC
--------------------------	-------



HIRL all Rwy's
TDZ/CL all Rwy's except 4L

VGSi and RNAV glidepath not coincident
(VGSi Angle 3.00/TCH 80).

*LNAV only.

ZUPTI
1.8 NM to
RW28C

*1 NM to
RW28C

RW28C

SEIKA

2300

1260

2300

1 NM 0.8 3.2 NM

5.7 NM

3.1 NM

3.1 NM

3.1 NM

3.1 NM

3.1 NM

3.1 NM

3.1 NM

3.1 NM

CATEGORY

A

B

C

D

LPV DA

851/18

200 (200-½)

LNAV/VNAV DA

1094/50

443 (500-1)

LNAV MDA

1060/24

409 (400-½)

1060/40

409 (400-¾)