
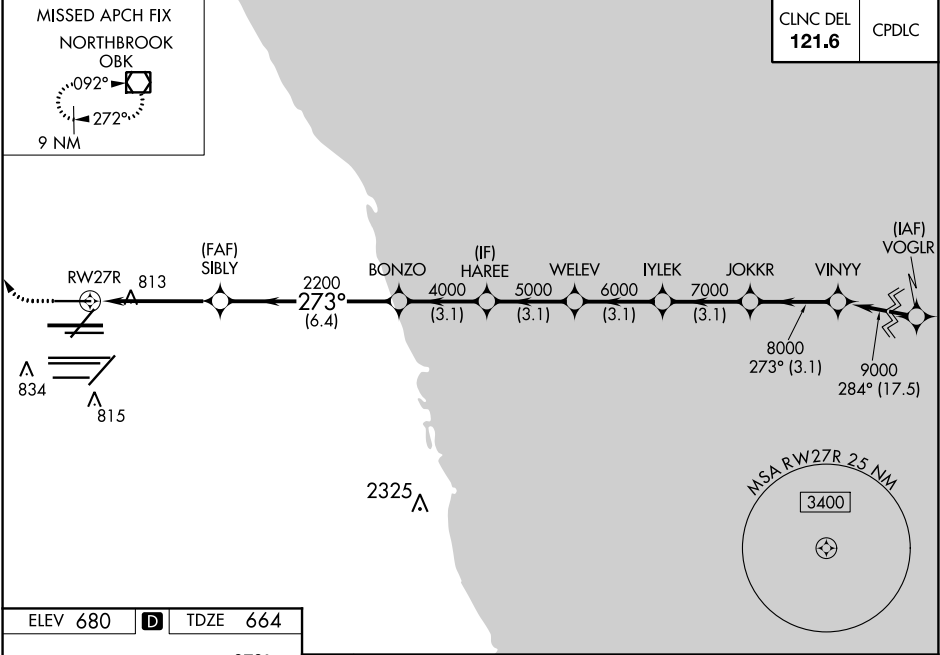


|  |                        |   |
|--|------------------------|---|
| WAAS<br>CH <b>69508</b><br><b>W27B</b> | APP CRS<br><b>273°</b> | Rwy Idg<br>TDZE <b>664</b><br>Apt Elev <b>680</b> |
|--|------------------------|---|

RNAV (GPS) RWY 27R

CHICAGO O'HARE INTL (ORD)

|   |                                  |  |  |  |
|---|----------------------------------|--|--|--|
| RNP APCH.   |                                  |  | ALSIF-2<br> | MISSED APPROACH: Climb to 1100 then climbing right turn to 4000 direct OBK VOR/DME and hold, continue climb-in-hold to 4000. |
| RADAR required for procedure entry.   |                                  |  |  |  |
| ▼ Simultaneous approach authorized. LNAV procedure NA during simultaneous operations. Use of FD or AP providing RNAV track guidance required during simultaneous operations. For uncompensated Baro-VNAV systems, procedure NA below -19°C or above 54°C. |                                  |  |  |  |
| D-ATIS<br>135.4<br>282.225  | CHICAGO APP CON<br>119.0 292.125 | O'HARE TOWERS<br>128.15 348.0 (Rwy 9L/27R)<br>120.75 121.15 126.9 132.7 348.0 (CENTER) | GND CON (TWR CENTER)<br>124.125 (TWR NORTH)<br>118.05 (TWR SOUTH)<br>226.675 (ALL TWRS)      | 121.75 (OBND)<br>121.9 (IBND)  |



|                 |          |                 |
|-----------------|----------|-----------------|
| ELEV <b>680</b> | <b>D</b> | TDZE <b>664</b> |
|-----------------|----------|-----------------|

