

RNAV (GPS) RWY 27C
CHICAGO O'HARE INTL (ORD)

Simultaneous approach authorized. LNAV procedure NA during simultaneous operations. Use of FD or AP required during simultaneous operations. For uncompensated Baro-VNAV systems, LNAV/VNAV NA below -19°C or above 54°C. For inop ALS, increase LNAV Cat C/D visibility to RVR 6000.

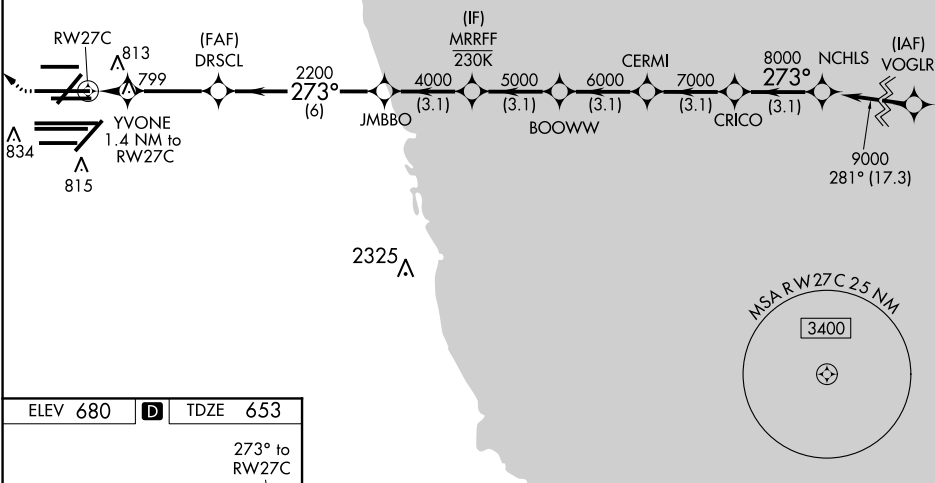


MISSED APPROACH: Climb to 1100 then climbing right turn to 4000 direct UKUNE and hold.

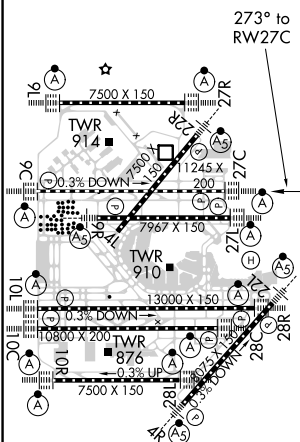
D-ATIS 135.4 282.225	CHICAGO APP CON 119.0 292.125	O'HARE TOWERS 128.15 348.0 (Rwy 9L/27R) 133.0 348.0 (10R/28L) 120.75 121.15 126.9 132.7 348.0 (CENTER)				GND CON 124.125 (TWR NORTH) 118.05 (TWR SOUTH) 226.675 (ALL TWRs)	(TWR CENTER) 121.75 (GBND) 121.9 (IBND)
--	--	---	--	--	--	---	---

CLNC DEL
121.6

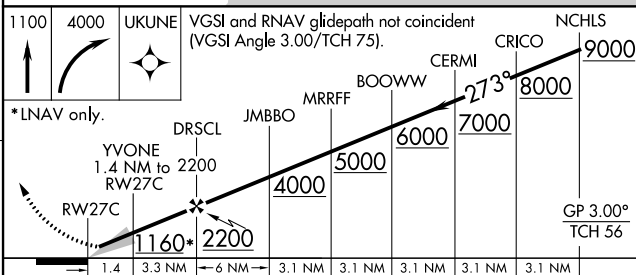
CPDLC



ELEV 680	D	TDZE 653
----------	----------	----------



HIRL all Rwys
TDZ/CL all Rwys except 4L



CATEGORY		A	B	C	D
LPV	DA	853/18 200 (200-½)			
LNAV/ VNAV	DA	1086/40 433 (500-¾)			
LNAV MDA		1060/24 407 (400-½)	1060/40 407 (400-¾)		