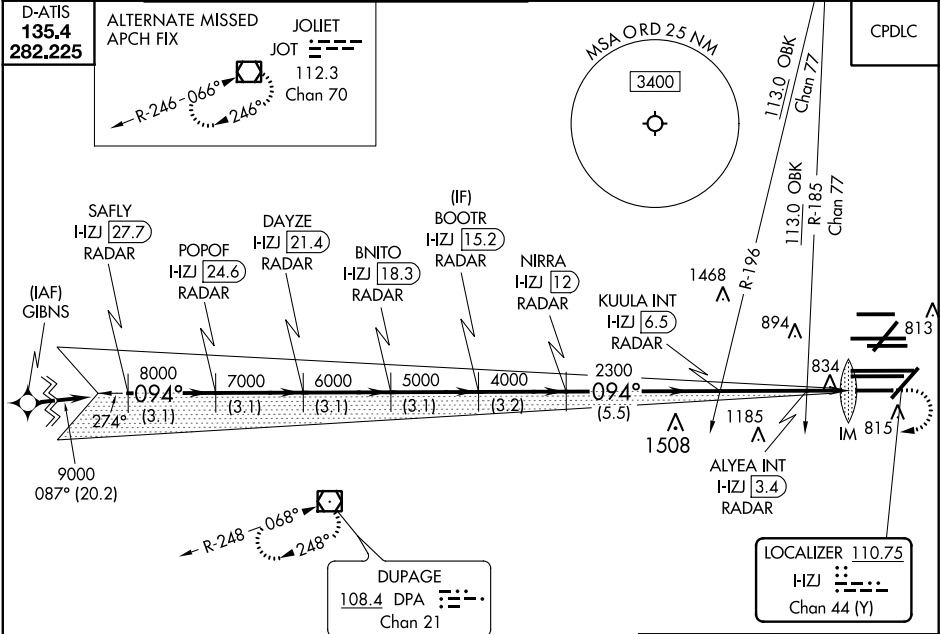


LOC/DME I-HZJ 110.75 Chan 44 (Y)	APP CRS 094°	Rwy Idg TDZE 680 Apt Elev 680
---	------------------------	---

ILS Z or LOC Z RWY 10R
CHICAGO O'HARE INTL (ORD)

RNAV 1-GPS or RADAR required for procedure entry. DME or RADAR required. From GIBNS: RNAV-1 GPS required. Simultaneous approach authorized. For inop ALS, increase S-LOC 10R Cat C and D visibility to RVR 6000.	ALSF-2 	MISSED APPROACH: Climb to 1200 then climbing right turn to 4000 direct DPA VOR/DME and hold.
---	------------	--

CHICAGO APP CON 119.0 292.125	O'HARE TOWERS 128.15 348.0 (Rwy 9L/27R) 133.0 348.0 (10R/28L) 120.75 121.15 126.9 132.7 348.0 (CENTER)	GND CON (TWR NORTH) 124.125 (TWR SOUTH) 118.05 (ALL TWRs) 226.675	(TWR CENTER) 121.75 (OBND) 121.9 (IBND)	CLNC DEL 121.6
---	--	--	---	--------------------------



SAFLY I-HZJ 27.7 RADAR	POPOF I-HZJ 24.6 RADAR	DAYZE I-HZJ 21.4 RADAR	BNITO I-HZJ 18.3 RADAR	BOOTR I-HZJ 15.2 RADAR	NIRRA I-HZJ 12 RADAR	KUULA INT I-HZJ 6.5 RADAR	ALYEA INT I-HZJ 3.4 RADAR	GS 3.00° TCH 55	3.1 NM	3.1 NM	3.1 NM	3.1 NM	3.2 NM	5.5 NM	3.1 NM	0.7 NM	0.1 NM
*LOC only																	
S-ILS 10R 880/18 200 (200-½)																	
S-LOC 10R 1100/24 420 (500-½)																	

ELEV 680	TDZE 680
TWR 914	
TWR 910	
TWR 876	
HIRL all Rwy's TDZ/CL all Rwy's except 4L	
FAF to MAP 4.9 NM	
Knots	60 90 120 150 180
Min:Sec	4:54 3:16 2:27 1:58 1:38

EC-3, 03 DEC 2020 to 31 DEC 2020

EC-3, 03 DEC 2020 to 31 DEC 2020